

# **Award-Winning Sustainability 2019**

## **(Part 1)**




*November 13, 2019*  
*CM | 0.5 (live viewing only)*

# Thank You to the 2019-2020 Sustainable Communities Division Sponsors!

**CLARION**

**EAST END**  
LAND PLANNING

 **HALFF**®  **Dewberry**®

  
Nitsch Engineering

  
**IDEATION**  
PLANNING

**UF** | Online Master's of  
Urban & Regional Planning  
College of Design,  
Construction and Planning

  
**teska**

**SMITHGROUP**

 **vhb**®

  
FARR ASSOCIATES

 **MARS-EOR**  
water - ecology - community

**Robinson+Cole**

The  
**Urban Collaborative**  
Master Planning + Urban Design + Architecture

UrbanWorks **25**

 **URBAN  
ECOPLAN**

*Interested in sponsorship? Contact Karla Ebenbach ([kebenbach@yahoo.com](mailto:kebenbach@yahoo.com))*



# Division Information

---

## Contact

**Website:** [planning.org/divisions/sustainable](http://planning.org/divisions/sustainable)

**Blog:** [sustainableplanning.net](http://sustainableplanning.net)

**LinkedIn:** APA Sustainable Communities Division

**Facebook/Twitter:** APASCD

**Email:** [APASCD@gmail.com](mailto:APASCD@gmail.com)



# 2020 Awards Overview

- **Deadline:** 5pm ET, January 18, 2020
- **Information packet** at [sustainableplanning.net](https://sustainableplanning.net) and [planning.org/divisions/sustainable/awards/](https://planning.org/divisions/sustainable/awards/)



American Planning Association  
Sustainable Communities Division

*Making Great Communities Happen*

## SEVENTH ANNUAL AWARDS FOR EXCELLENCE IN SUSTAINABILITY



Honoring projects, plans, policies, individuals, and organizations whose work is dedicated to supporting and growing sustainable communities.

7th Annual Awards  
for Excellence in  
Sustainability

Information Packet



# Process

- **Submission via web form**
  - Word template provided on website
- **New for 2020**
  - Revised categories
  - Clarified scoring structure

APA  
Sustain

## Seventh Annual Awards for Excellence in Sustainability

### Nomination Form

The Sustainable Communities Division (SCD) of the American Planning Association is pleased to announce the opening of the nomination period for the Seventh Annual Awards for Excellence in Sustainability.

Before you continue, **PLEASE REVIEW** the information below:

1. Entries will be accepted no later than 5:00 p.m. (EST) on Saturday, January 18, 2020.
2. Please review the [full information packet](#), including eligibility requirements, before you begin. (The link goes to the SCD website.)
3. You must fill out the form all at once (i.e., you cannot save and come back).
4. We suggest you utilize the Word template (found on the [SCD website](#)) to prepare the text that you will need to provide prior to starting the form.
5. If you submit the form once and would like to re-submit before the end of the nomination period, please feel free to do so. We will review only the most recently-completed form.
6. We will keep track of any FAQs and process updates on the blog site (<https://apascd.wordpress.com/awards/>). If you would like to be directly notified of any updates, please send an email to the awards coordinator at [jenniferk@rhiplaces.com](mailto:jenniferk@rhiplaces.com), with the subject line "SCD Award Updates".
7. Questions or issues related to your submission should be directed via email to the SCD Awards Coordinator: Jennifer Koch, AICP, [jenniferk@rhiplaces.com](mailto:jenniferk@rhiplaces.com).

\* I've read the above and I'm ready to complete the nomination form!

Yes

Progress bar: 10% complete

Next



# Nine Categories

---

- Community Plan
- Municipal, State, or Regional Plan
- Energy Plan or Project
- Policy, Law, or Tool
- Park, Recreation, or Open Space Plan or Project
- Green Infrastructure Plan or Project
- Transportation Plan or Project
- Urban Design Plan or Development Project
- Leadership in Sustainability



# Scoring of Evaluation Criteria

## For all categories except Leadership in Sustainability, the criteria topics include:

1. Project Background (1 criterion)
2. Contextual Creativity + Innovation (3 criteria)
3. Compatibility (1 criterion)
4. Effectiveness + Results (1 criterion)
5. Collaboration + Engagement (2 criteria)

## For the Leadership in Sustainability category, the criteria topics include:

1. Background (1 criterion)
2. Quality (1 criterion)
3. Influence (1 criterion)
4. Innovation + Inspiration (1 criterion)
5. Outreach + Engagement (1 criterion)

**Please make sure to explicitly and directly address how your project meets each criterion.** Jurors will award each criterion response a score between 0-5, using the guidelines below, for a total score out of 25 or 40 points, depending on the category.

- Includes no information addressing this set of criteria = 0 points
- Addressed some criteria but demonstrated few accomplishments = 1 point
- Addressed most criteria and demonstrated some accomplishments = 2 points
- Clearly addressed all criteria and demonstrated average accomplishments = 3 points
- Clearly addressed all criteria and demonstrated above average accomplishments = 4 points
- Clearly addressed all criteria and demonstrated exceptional accomplishments = 5 points



# Notice of Updates or Clarifications

- ⦿ We will keep track of FAQs here:  
[apascd.wordpress.com/awards/](https://apascd.wordpress.com/awards/)
- ⦿ If you would like to be directly notified of any substantial updates, please send an email to the awards coordinator (jenniferk@rhiplaces.com), with the subject line "SCD Award Updates"





# Today's Event

## Award-Winning Sustainability 2019

### (Part 1)

## 2018 Cleveland Climate Action Plan

- ◎ **Matt Gray** | Chief of Sustainability, City of Cleveland
- ◎ **Nicholas B. Rajkovich, PhD, AIA** | Assistant Professor of Architecture, University at Buffalo





**Please submit your questions throughout the session!**

- We'll have a **Q&A** at the end of the webinar, but please feel free to send your questions any time!
- You can use the chat box or the Q&A tool

Ask the presenter a question

Type your question here and press ENTER to submit

# Cleveland Climate Action: Building Thriving and Resilient Neighborhoods for All

*November 13, 2019*



SUSTAINABLE  
CLEVELAND 2019

# The Spark that Ignited a Movement

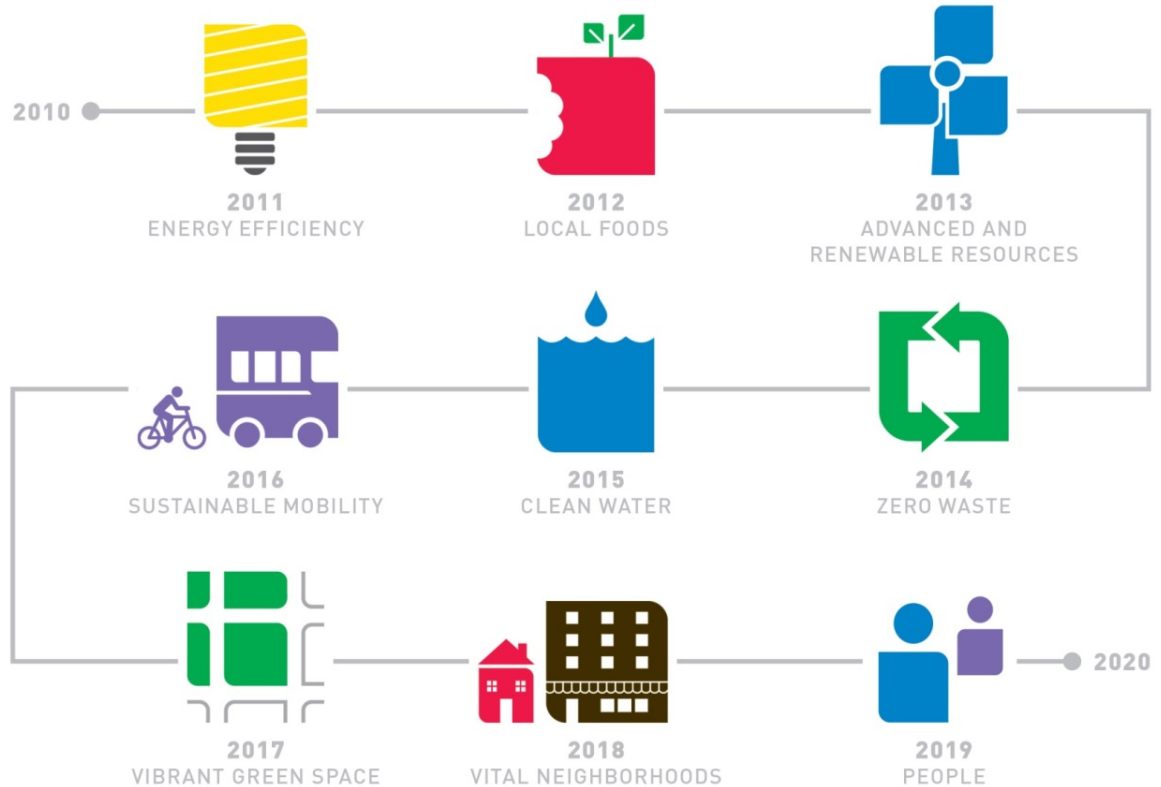
On morning of June 22, 1969, a spark dropped from a train passing over the Cuyahoga River, and for the 13th documented time over the previous century, it caught fire. What followed changed Cleveland, and the world, forever.



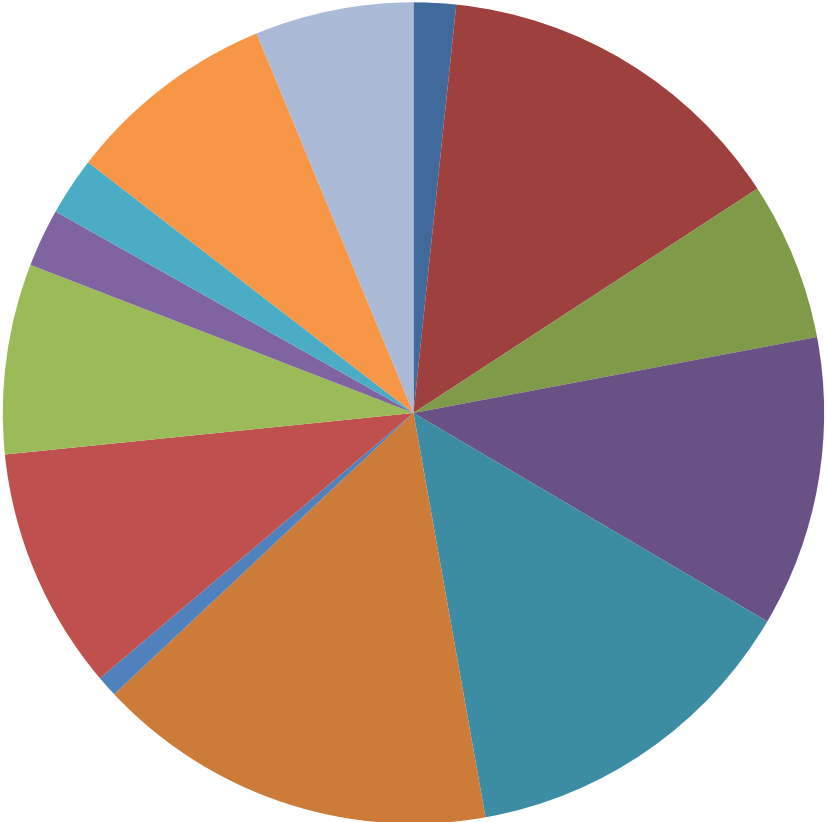


SUSTAINABLE  
CLEVELAND 2019

TOGETHER, WE'RE BUILDING A THRIVING  
GREEN CITY ON A BLUE LAKE



# Multi-Sector Approach



- Arts and Culture
- Business
- Community Development
- Education
- Environmental
- Government
- Labor
- Nonprofit - Other
- Resident
- Retired
- Social Services
- Student
- Volunteer

**More than 400 U.S. #ClimateMayors,**  
*representing 70 million Americans,*



**have committed to adopt, honor, and uphold  
the climate goals of the Paris Agreement.**

A stylized world map in shades of green and blue, with numerous small blue dots representing cities scattered across the continents. The map is partially obscured by text boxes.

**7,494 CITIES**

**680 MILLION PEOPLE**

**FOR CLIMATE & ENERGY**



**GLOBAL COVENANT**  
*of MAYORS for*  
**CLIMATE & ENERGY**



# Cleveland Leading on Climate

 **CDP**  
Top 5 cities  
leading on  
climate  
disclosure

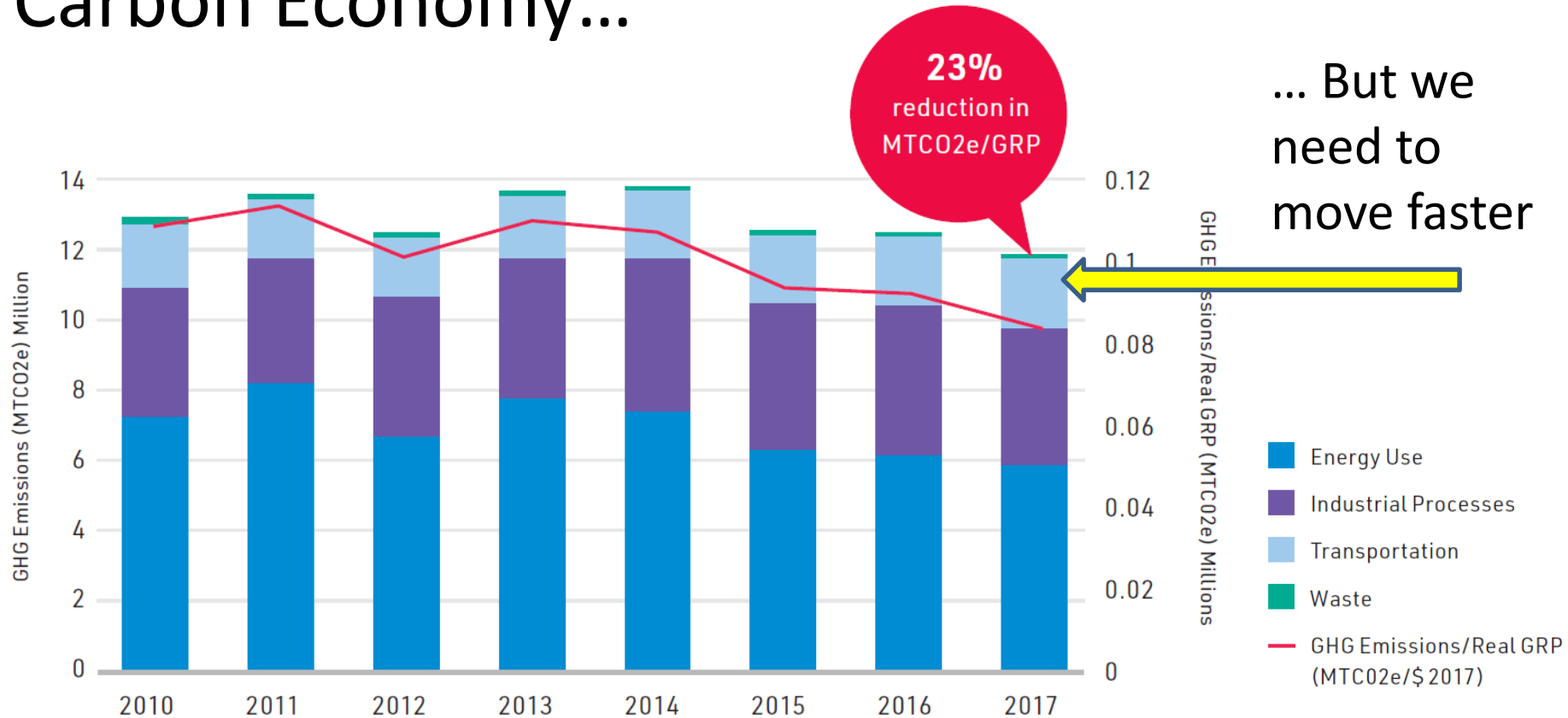


**American Planning Association**

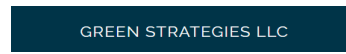
*Creating Great Communities for All*



# Cleveland's on its way to creating a Low-Carbon Economy...



# CLIMATE ACTION ADVISORY COMMITTEE



# CAP COMMUNITY PARTNERS



Cleveland  
Neighborhood  
Progress



**RESILIENT**  
CLEVELAND 

**ioby**

## *TECHNICAL ASSISTANCE*

**REI**  
racialequityinstitute, llc

 **brendle** GROUP

**BrownFlynn**  
Do Good. Do Well. Win.™

**CUDC**  
KENT STATE  
UNIVERSITY  
CLEVELAND  
URBAN DESIGN  
COLLABORATIVE

**UB**  
**University at Buffalo**  
*The State University of New York*

# CLEVELAND CLIMATE ACTION PLAN

## 2018 UPDATE

**BUILDING THRIVING  
AND RESILIENT  
NEIGHBORHOODS  
FOR ALL**



**Energy Efficiency &  
Green Building**



**Clean  
Energy**



**Sustainable  
Transportation**



**Clean Water &  
Vibrant Green Space**



**More Local Food,  
Less Waste**



**Cross-Cutting  
Priorities**



## Cross-Cutting Priorities



**Social & Racial Equity**



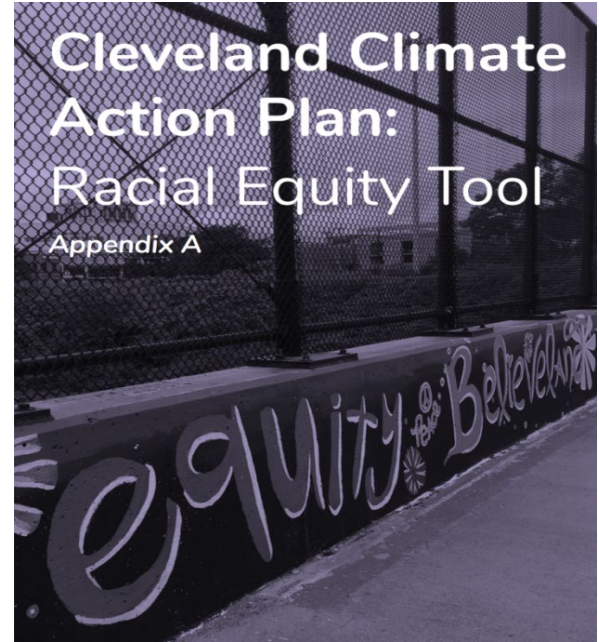
**Good Jobs, Green Jobs**



**Climate Resilience**



**Business Leadership**

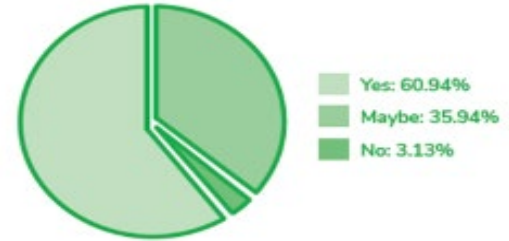


# Resident Engagement

- 12 neighborhood workshops, over 300 attendees
- Resident-led, neighborhood-based climate action projects
  - 1:1 match from Cleveland Climate Action Fund
  - >20 projects received match \$\$



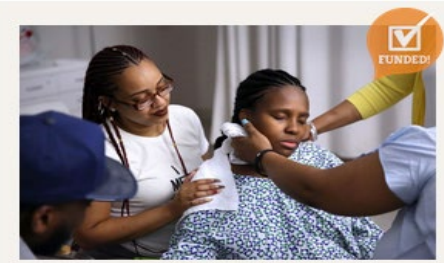
Q: After attending the workshop are you inspired to do a project?



**Food Pantry Needs Solar Power**



**Open Streets Cleveland**



**The Mothership Connection**

# Cleveland Climate Action Fund

96 projects in Cleveland since 2012

*ClevelandClimateAction.org*





**APPENDIX A:**

**Cleveland’s Greenhouse Gas Inventory**

Cleveland’s Carbon Footprint (including progress since 2010 and future projections)

**APPENDIX B:**

**Climate Action Implementation Plans**

Detailed action steps, key implementers, indicators to measure progress, and other notes.

**APPENDIX C:**

**Cleveland Climate Action Plan Racial Equity Tool**

A framework to be used prior to making decisions within city government and other institutions looking to advance racial equity and shared prosperity.

**APPENDIX D:**

**Climate and Social Vulnerability Assessment**

This assessment and template overlaps social factors with climate factors to determine geographies and populations most vulnerable to the negative impacts of climate change.

**APPENDIX E:**

**Corporate Environmental and Social Governance Analysis**

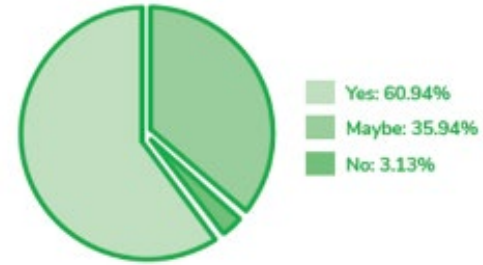
An analysis of publicly available environmental and social governance (ESG) data for the largest public companies in Northeast Ohio.

**APPENDIX F:**

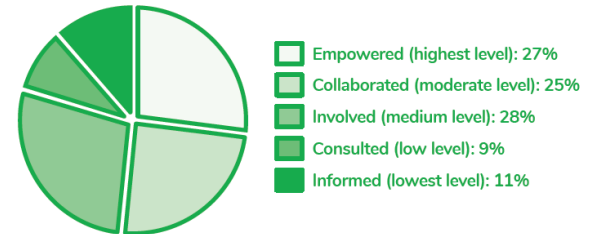
**Green Jobs / Workforce Development Analysis**

A baseline methodology for monitoring the impact that implementation of the CAP has on employment over time.

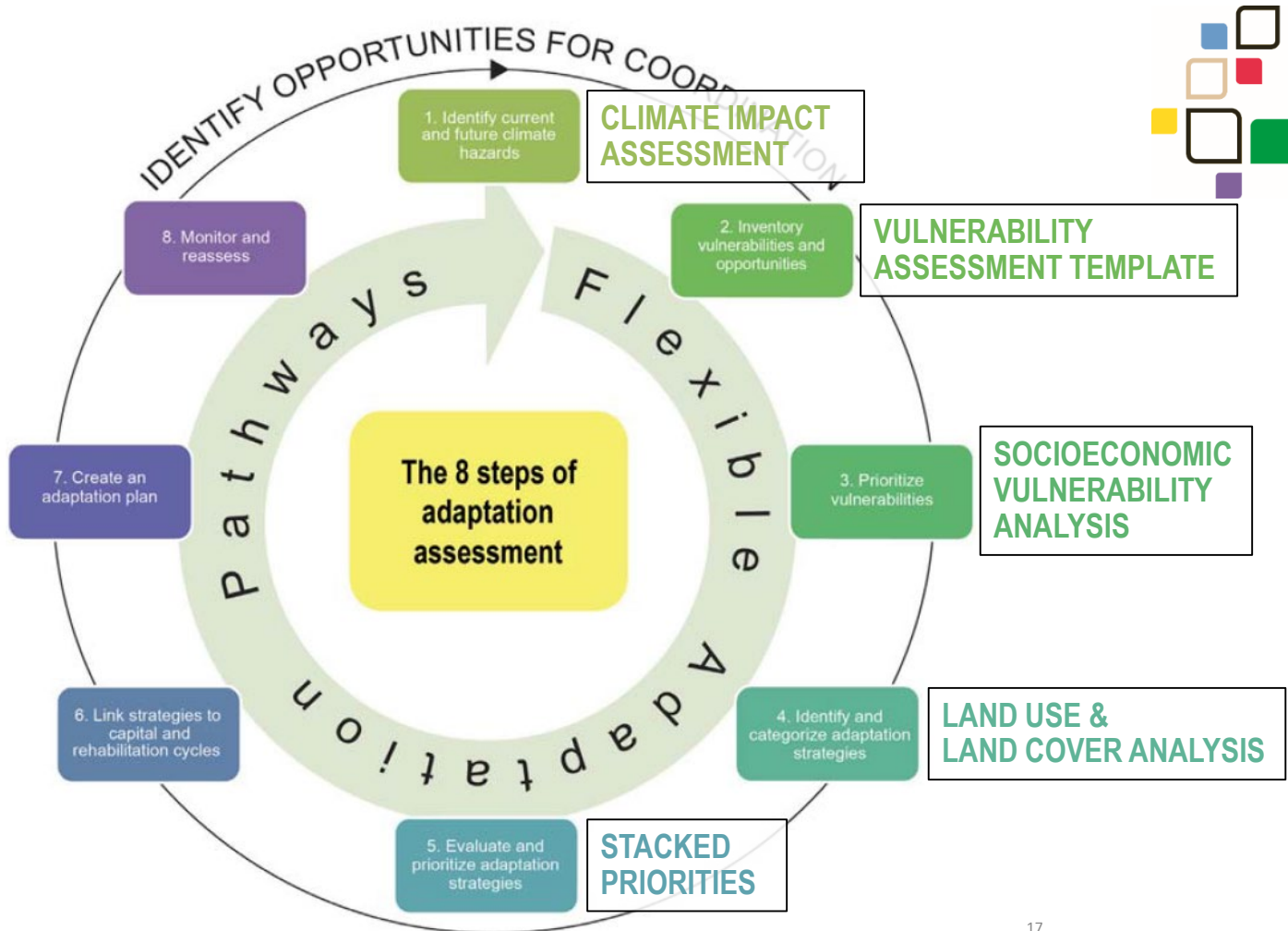
Q: After attending the workshop are you inspired to do a project?



Q: As a result of attending the workshop, how engaged do you feel in the Climate Action Plan and efforts of the City and partners to ensure neighborhood priorities are included in the process?








# CLIMATE IMPACT ASSESSMENT



- **EXTREME HEAT DAYS**
  - Average air temperature in Cleveland has increased 2.4°F since the 1950s
- **DECREASING AIR QUALITY**
  - Increased air temperature  decreased air quality
- **FLOODING EVENTS**
  - Annual precipitation in Cleveland has increased by 24.6% (8.7") since the 1950s
- **EXTREME PRECIPITATION EVENTS**
  - Heavy precipitation days, defined as events with >1.25" per day, are projected to increase by 33-78% by the 2050s

# VULNERABILITY ASSESSMENT

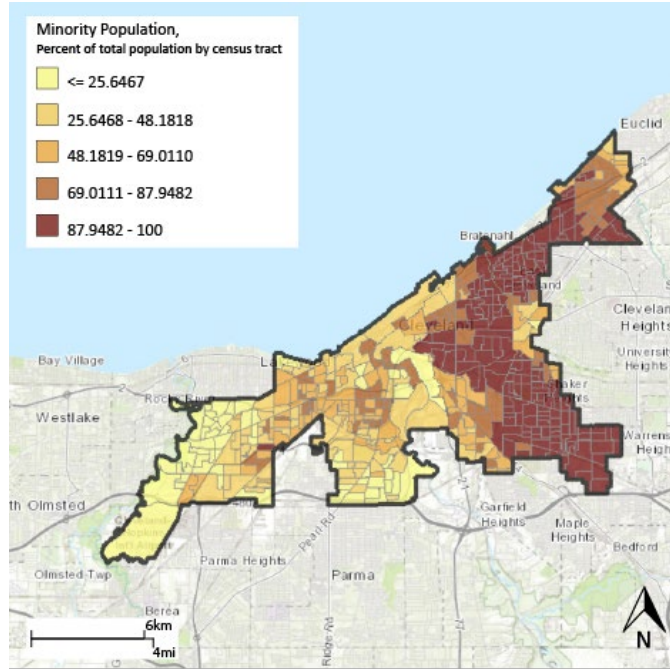


- **NON-WHITE POPULATION**
  - 59.7% of Cleveland is non-white
- **POVERTY**
  - 31.4% of Cleveland families live in poverty
- **AGE**
  - 6.6% of Cleveland's population is under age of 5
  - 13 % of Cleveland's population is above the age of 65
- **HOUSING COMPOSITION**
  - Renters live in 58.1% of all the occupied housing units in Cleveland
- **EDUCATIONAL ATTAINMENT**
  - 21.6% of Cleveland residents over the age of 25 do not have a high school diploma
- **DISABILITY STATUS**
  - 20% of Cleveland residents have a documented disability

# VULNERABILITY ASSESSMENT

NON-WHITE POPULATION, PERCENT	NEIGHBORHOOD
<b>&gt;90%</b>	Buckeye-Woodhill, Central, Euclid-Green, Fairfax, Glenville, Hough, Kinsman, Lee-Harvard, Lee-Seville, Mount Pleasant, Union-Miles
<b>80-89%</b>	Buckeye-Shaker Square, Collinwood-Nottingham, St. Clair-Superior
<b>70-79%</b>	Buckeye-Woodhill, Kinsman
<b>60-69%</b>	North Shore-Collinwood
<b>50-59%</b>	Broadway-Slavic Village, Downtown, Goodrich-Kirtland Park

Data Source: NeoCANDO Neighborhood Data Warehouse, 2018. Available from: <http://neocando.case.edu/neocando/>



Data Source: Trust for Public Land Climate Smart Cities® Cleveland mapping portal, 2018. Available from: <https://web.tplgis.org/clevelandscssecureviewer/>.

# LAND USE & LAND COVER ANALYSIS



- **URBAN HEAT ISLAND EFFECT**
  - Urban regions are warmer than their rural surroundings.<sup>1</sup>
- **TREE CANOPY**
  - “All land that is covered by trees (with leaves on) when viewed from above.”<sup>2</sup>
- **IMPERVIOUS LAND COVER**
  - Includes surfaces made from materials that do not absorb precipitation (i.e. asphalt, concrete, brick, etc.)

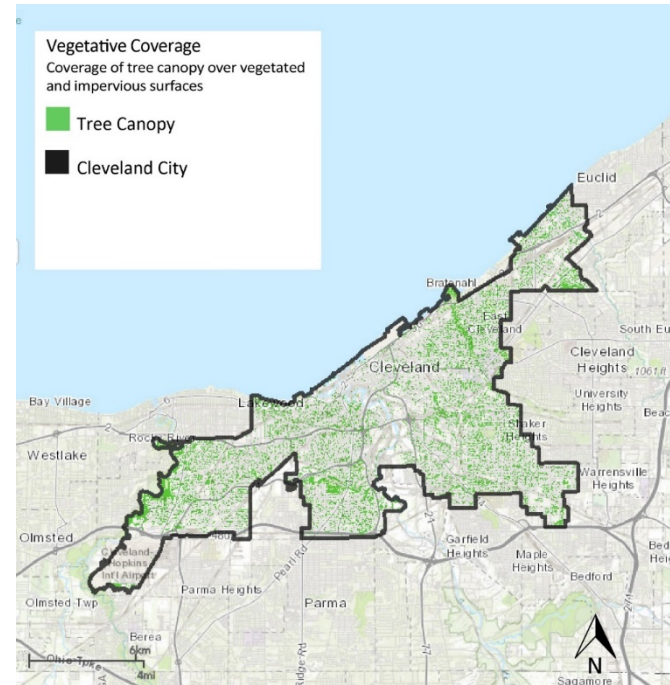
1.) *Reducing Urban Heat Islands: Compendium of Strategies*, 2014. Available from: <https://www.epa.gov/sites/production/files/2014-06/documents/basicscompendium.pdf>

2.) *The Cleveland Tree Plan*, 2015. Available from: [http://www.city.cleveland.oh.us/sites/default/files/forms\\_publications/ClevelandTreePlan.pdf](http://www.city.cleveland.oh.us/sites/default/files/forms_publications/ClevelandTreePlan.pdf)

# LAND USE & LAND COVER ANALYSIS

TREE CANOPY, PERCENT	NEIGHBORHOOD
<10%	Downtown, Goodrich-Kirtland Pk
10-19%	Bellaire-Puritas, Broadway-Slavic Village, Central, Collinwood-Nottingham, Cudell, Detroit Shoreway, Fairfax, Jefferson, St. Clair-Superior, Stockyards, Tremont
20-29%	Brooklyn Centre, Buckeye-Shaker Square, Buckeye-Woodhill, Clark Fulton, Glenville, Hough, Kinsman, Lee-Harvard, Lee-Seville, Mount Pleasant, North Shore Collinwood, Ohio City, Old Brooklyn, Union-Miles, University, West Boulevard
>30%	Edgewater, Euclid-Green, Kamm's Corner

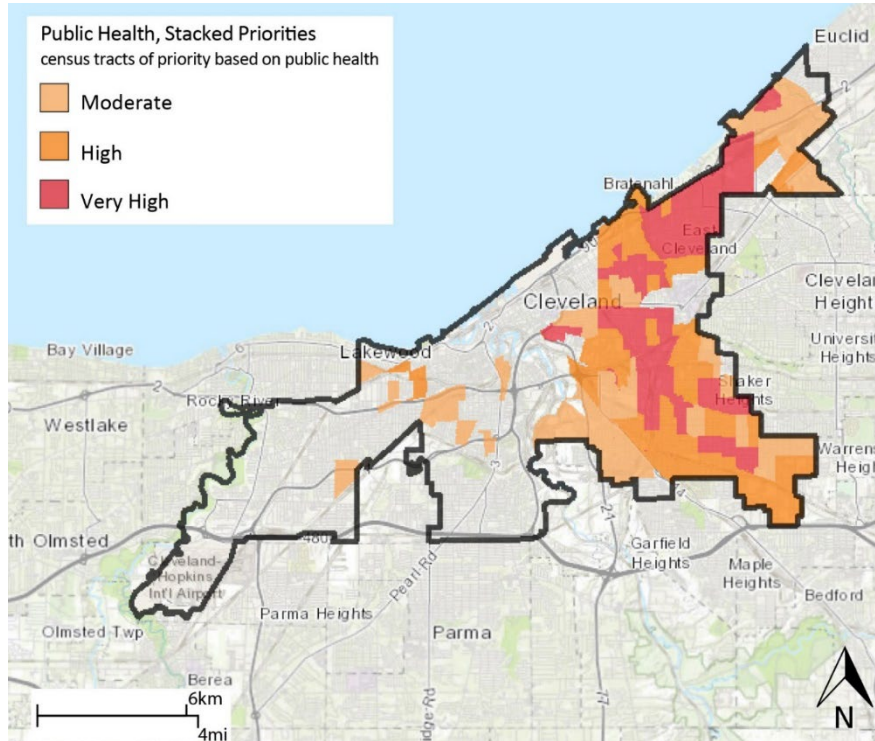
Data Source: The Cleveland Tree Plan Cleveland Forest Coalition, 2015. Available from: [http://www.city.cleveland.oh.us/sites/default/files/forms\\_publications/ClevelandTreePlan.pdf](http://www.city.cleveland.oh.us/sites/default/files/forms_publications/ClevelandTreePlan.pdf)



Data Source: Trust for Public Land Climate Smart Cities® Cleveland mapping portal, 2018. Available from: <https://web.tplgis.org/clevelandscssecure/viewer/>



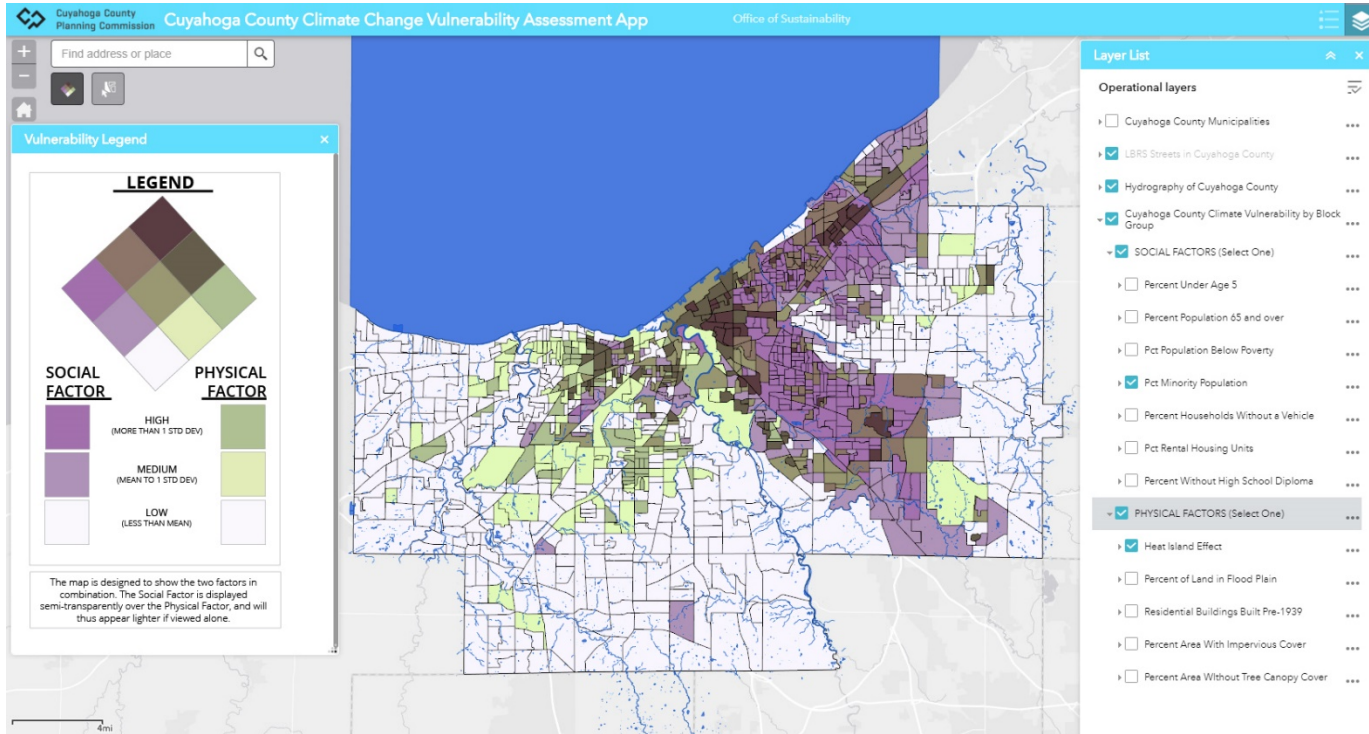
# STACKED PRIORITIES: CLEVELAND



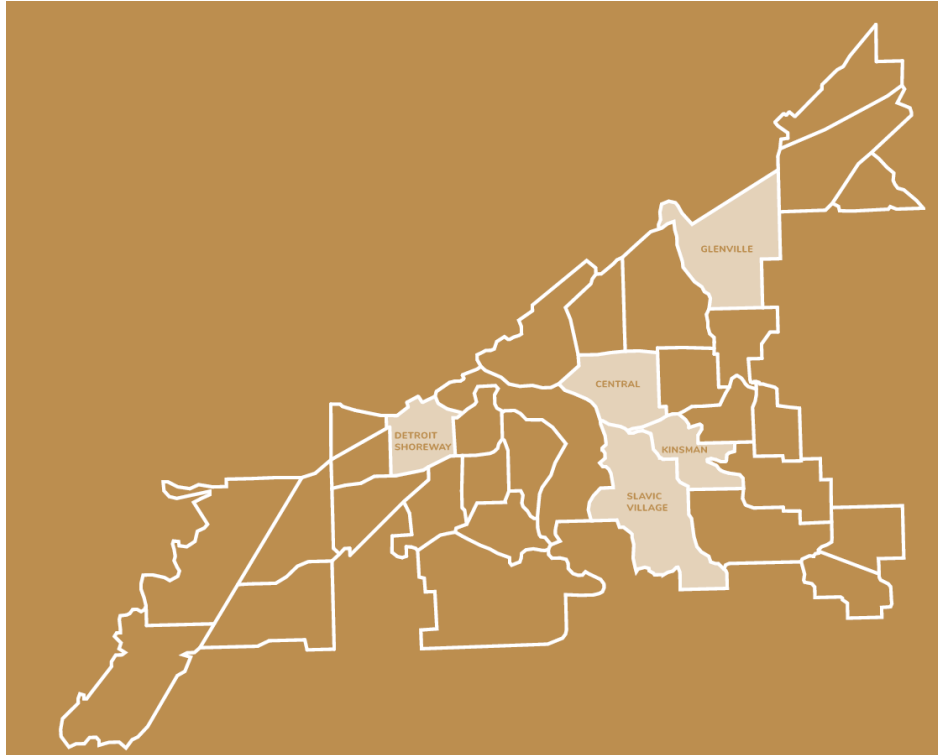
[https://web.tplgis.org/cleveland\\_csc/](https://web.tplgis.org/cleveland_csc/)

Data Source: Trust for Public Land Climate Smart Cities® Cleveland mapping portal, 2018. Available from: <https://web.tplgis.org/clevelandcscsecure/viewer/>.

# STACKED PRIORITIES: CUYAHOGA COUNTY



# Climate Resilience at Neighborhood Level



## CLEVELAND

*Climate Resilience & Urban Opportunity Plan*

Cleveland  
Neighborhood  
Progress



Cleveland Neighborhood Progress  
11327 Shaker Blvd #500W, Cleveland, OH 44104  
(216) 830-2770 | [www.npi-cle.org](http://www.npi-cle.org)

IN PARTNERSHIP WITH:

City of Cleveland, Mayor's Office of Sustainability  
Cleveland Urban Design Collaborative  
University at Buffalo  
Kent State University

28 SEPTEMBER 2015



# Conversation

AICP CM #9187560

## **Matt Gray**

*Chief of Sustainability*

*City of Cleveland*

MGray@city.cleveland.oh.us

## **Nick Rajkovich, PhD, AIA**

*Assistant Professor of Architecture*

*University at Buffalo*

rajkovic@buffalo.edu

## **Jenny Koch, AICP**

*SCD Awards Coordinator*

*Senior Associate, RHI*

jenniferk@rhiplaces.com

Part 2 of this webinar is on

December 6, 1-2:30pm ET

More info: [SustainablePlanning.net](http://SustainablePlanning.net)

### Division Contact Information

Matt Bucchin, Chair

info\_sustain@planning.org

sustainableplanning.net

@APASCD

