

The **APA Sustainable Communities Division** supports planners who are committed to planning for sustainable communities by **integrating all aspects of sustainability into our work** through the combined economic, social, and ecological factors that shape our communities.

APA

Sustain

# Webinar

## Award-Winning Sustainability Part 1

**November 14, 2017**

# Thank you to the 2017-2018 Sustainable Communities Division Sponsors!

CLARION



**Dewberry**<sup>®</sup>

FARR  
ASSOCIATES

 **HALFF**<sup>®</sup>

  
Nitsch Engineering

Robinson+Cole

SMITHGROUP **JJR**



 **Montgomery Associates**  
*Resource Solutions*



Interested in sponsorship?  
Contact Merrill St Leger Demian  
([Merrill.StLegerDemian@smithgroupjjr.com](mailto:Merrill.StLegerDemian@smithgroupjjr.com))

# Division Contact Information

## Website:

[planning.org/divisions/sustainable](http://planning.org/divisions/sustainable)

**Blog:** [www.sustainableplanning.net](http://www.sustainableplanning.net)

**LinkedIn:** APA Sustainable Communities Division

**Facebook/Twitter:** APASCD

**Scott Turner, Division Chair:**  
[APASCD@gmail.com](mailto:APASCD@gmail.com)

APA

Sustain



*Photo: HDR/City of Kansas City –  
Kansas City Downtown Streetcar*

# 2018 Awards for Excellence in Sustainability

**Nominations Due:** Friday  
January 19, 2018

**10 award categories**



THE AMERICAN PLANNING ASSOCIATION SUSTAINABLE COMMUNITIES DIVISION PROUDLY ANNOUNCES THE

## FIFTH ANNUAL AWARDS FOR EXCELLENCE IN SUSTAINABILITY

Honoring projects, plans, policies, individuals, and organizations whose work is dedicated to supporting and growing sustainable communities.

American Planning  
Association Sustainable  
Communities Division  
5th Annual Awards for  
Excellence in Sustainability  
**Information Packet**

# Ten Categories

(**Blue** = New or changed)

- **Community Sustainability or Resilience Plan**
- **State or Regional Sustainability or Resilience Plan**
- Sustainable Policy, Law, or Tool
- Sustainable Urban Design Plan or Development Project
- Sustainable Building Project
- Sustainable Park, Recreation, or Open Space Project
- Sustainable Transportation Project
- Sustainable Green Infrastructure Project
- **Student Sustainability Project or Paper**
- Leadership in Sustainability



# General Criteria

**Creativity + Innovation**

**Compatibility** *with other plans/projects*

**Effectiveness + Results**

**Collaboration + Engagement**

**Transferability**



# Submissions

**Nominations Due:** Friday January 19, 2018

**Upload to Dropbox:** single PDF, 10mb max.

**More Information:**

[apascd.wordpress.com/awards/](http://apascd.wordpress.com/awards/)

**Questions should be directed via email to the SCD Awards Coordinator:**

[jenniferk@rhodeside-harwell.com](mailto:jenniferk@rhodeside-harwell.com)



# TODAY

## Award-Winning Sustainability, Part 1

**Maryland Department of Housing and Community Development Division of Neighborhood Revitalization:** Winner of Leadership in Sustainability award

- **Kevin Baynes, AICP**
- **Mary Kendall**

**Lindsay Street Park (Atlanta):** Winner of Sustainable Park, Recreation, or Open Space Project Award

- **Shannon Lee (The Conservation Fund)**
- **Darryl Haddock (West Atlanta Watershed Alliance)**

APA

Sustain







**Annapolis**



**Port Deposit**



**Garrett County  
Municipalities**



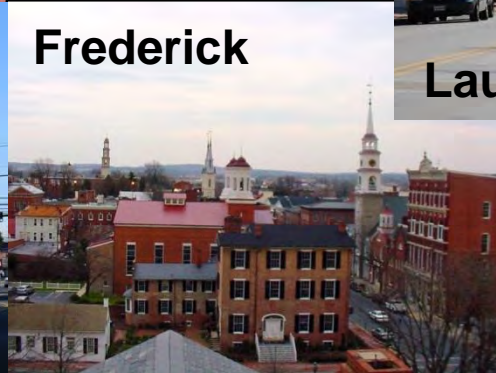
**Laurel**



**Manchester**



**Catonsville/  
Patapsco**



**Frederick**

# MARYLAND'S SUSTAINABLE COMMUNITIES

**Larry Hogan  
GOVERNOR**

**Boyd K. Rutherford  
LT. GOVERNOR**

**Kenneth C. Holt  
SECRETARY**

**Tony Reed  
DEP. SECRETARY**



**Snow Hill**



**Cambridge**



Maryland Department of Housing  
and Community Development  
**DHCD** Secretary Kenneth C. Holt

# MARYLAND'S REVITALIZATION DESIGNATIONS

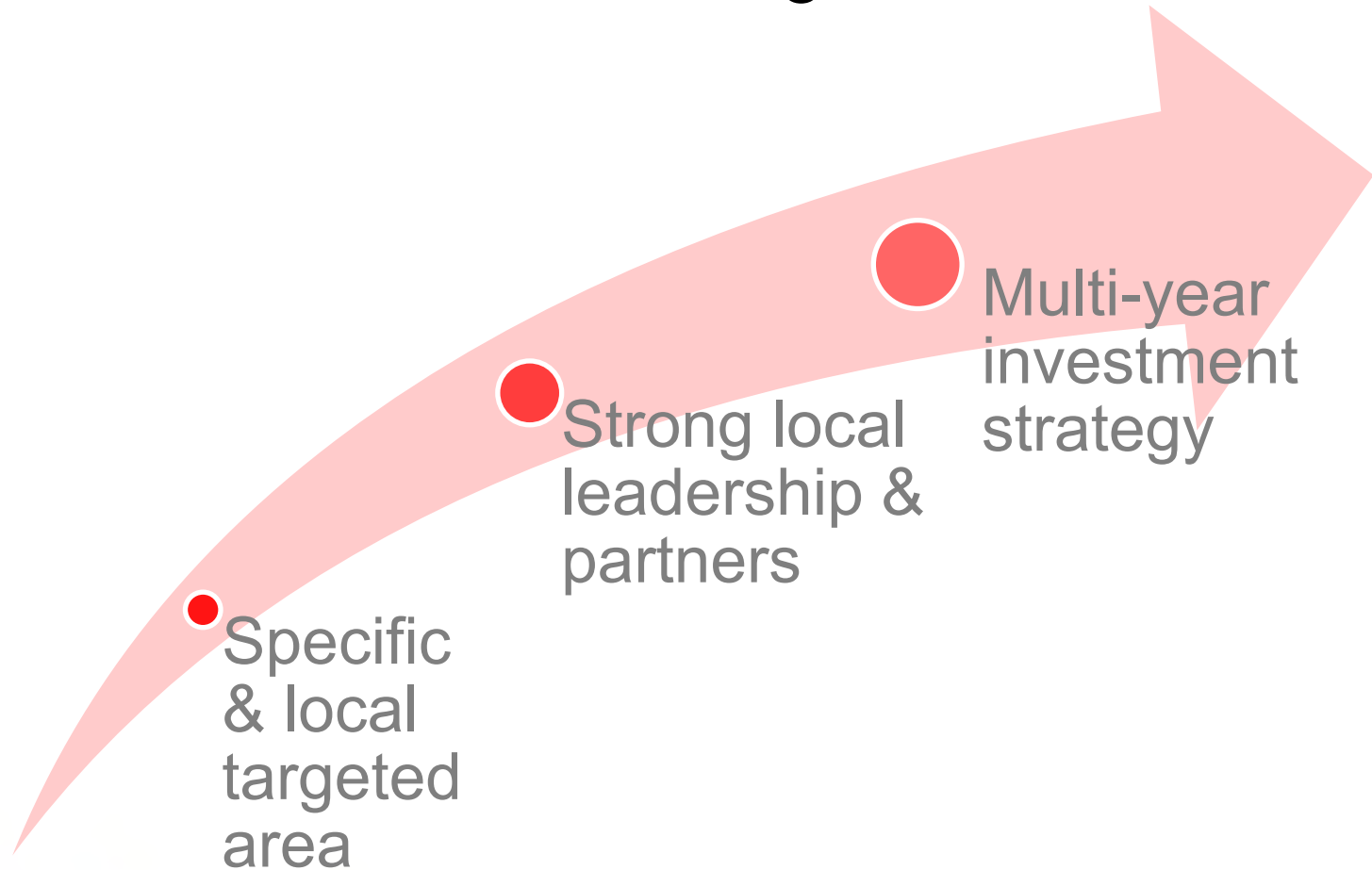
- Designated Neighborhoods (1995)
- Priority Funding Areas (1997)
- Community Legacy Areas (2001)
- BRAC Zones (2008)
- TOD Zones (2008)
- Sustainable Communities Act (2010)

# 2010 SUSTAINABLE COMMUNITIES ACT

- Encouraged local governments to target a geographic area in need of investment and prepare a 5-year revitalization strategy/action plan
- Create a shared designation, “Sustainable Communities” among various agencies – interagency review; DHCD lead agency
- Provided opportunity to offer multi-agency “revitalization tool box” and “stack” state resources
- All TOD and BRAC zones are Sustainable Communities

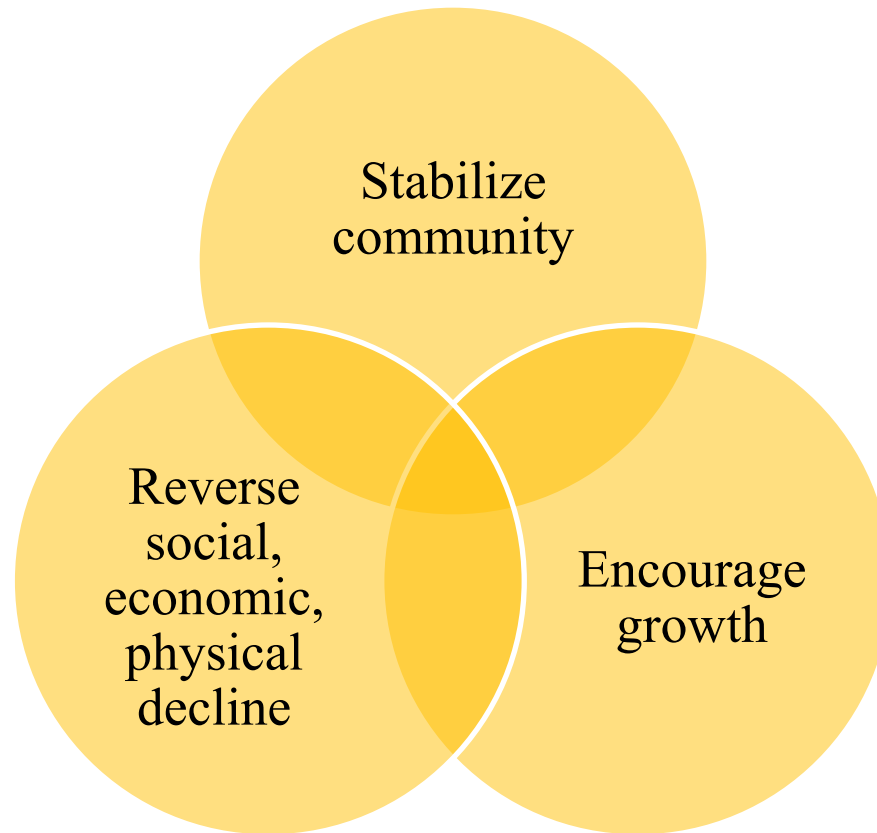
# REVITALIZATION BUILDING BLOCKS

Where Revitalization is Working



# REVITALIZATION BUILDING BLOCKS

Revitalization Investments Will.....



# SC ACTION PLAN COMPONENTS



# SUSTAINABLE COMMUNITIES: SHARED DESIGNATION AMONG VARIOUS AGENCIES



DHCD Leads Sustainable Communities Program and Process



Inter-Agency Team Reviews All Plans and Proposed Boundaries



Approval by Smart Growth Subcabinet



Maryland Department of the Environment

DHCD Secretary makes recommendations to Smart Growth Sub-Cabinet

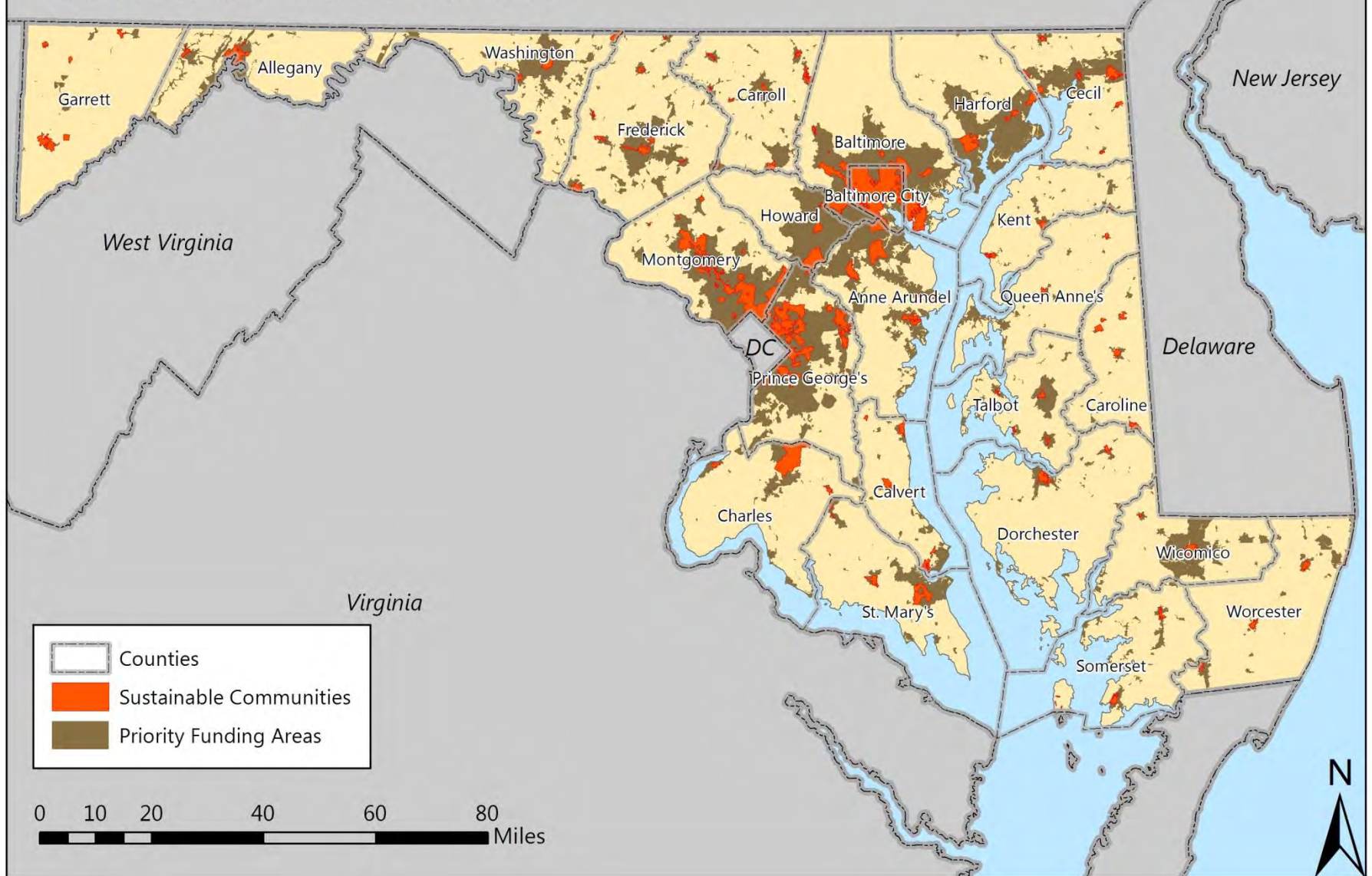


# SUSTAINABLE COMMUNITIES: MULTI-AGENCY TOOLBOX

State/ Partner Agency	Names of Programs				
<b>DHCD</b>	Community Legacy ( <i>threshold</i> )	Neighborhood Business Works Loan	Strategic Demolition and Smart Growth Impact Fund ( <i>threshold</i> )	Baltimore Regional Neighborhood Initiative ( <i>threshold</i> )	LIHTC and MMP
<b>MDOT</b>	Sidewalk Retrofit	Maryland Bikeways	Community Safety and Enhancement		
<b>MDP and Environmental Finance Center (UMD)</b>	Tax Increment Financing (MDP/ MEDCO)	Sustainable MD Certified (UMD)			
<b>Commerce and MDE</b>	Job Creation Tax Credit (Commerce)	MDE Water Quality Revolving Loan			



# Maryland's Sustainable Communities



# Sustainable Communities Application

- Facilitates “action” (implementation) planning of comprehensive plans (structured like a workplan)
- Provides technical assistance in the development of revitalization strategies to smaller municipal governments

*“Planners with checkbooks”*

*– Kevin N. Baynes*

Environment

(Environmental strengths and weaknesses can include but are not limited to quality of land, water, air, watersheds, tree canopy, risk of sea level rise, carbon footprint, energy conservation, access to local foods, green infrastructure, stormwater infrastructure/management, parks, trails and recreation, recycling, water and sewer capacity, etc)

<u>Strengths</u>	<u>Weaknesses</u>
Insert bulleted list of strengths (provide some detail as to why and how this is a strength in your community)	Insert bulleted list of weaknesses (provide some detail as to why and how this is a weakness in your community)

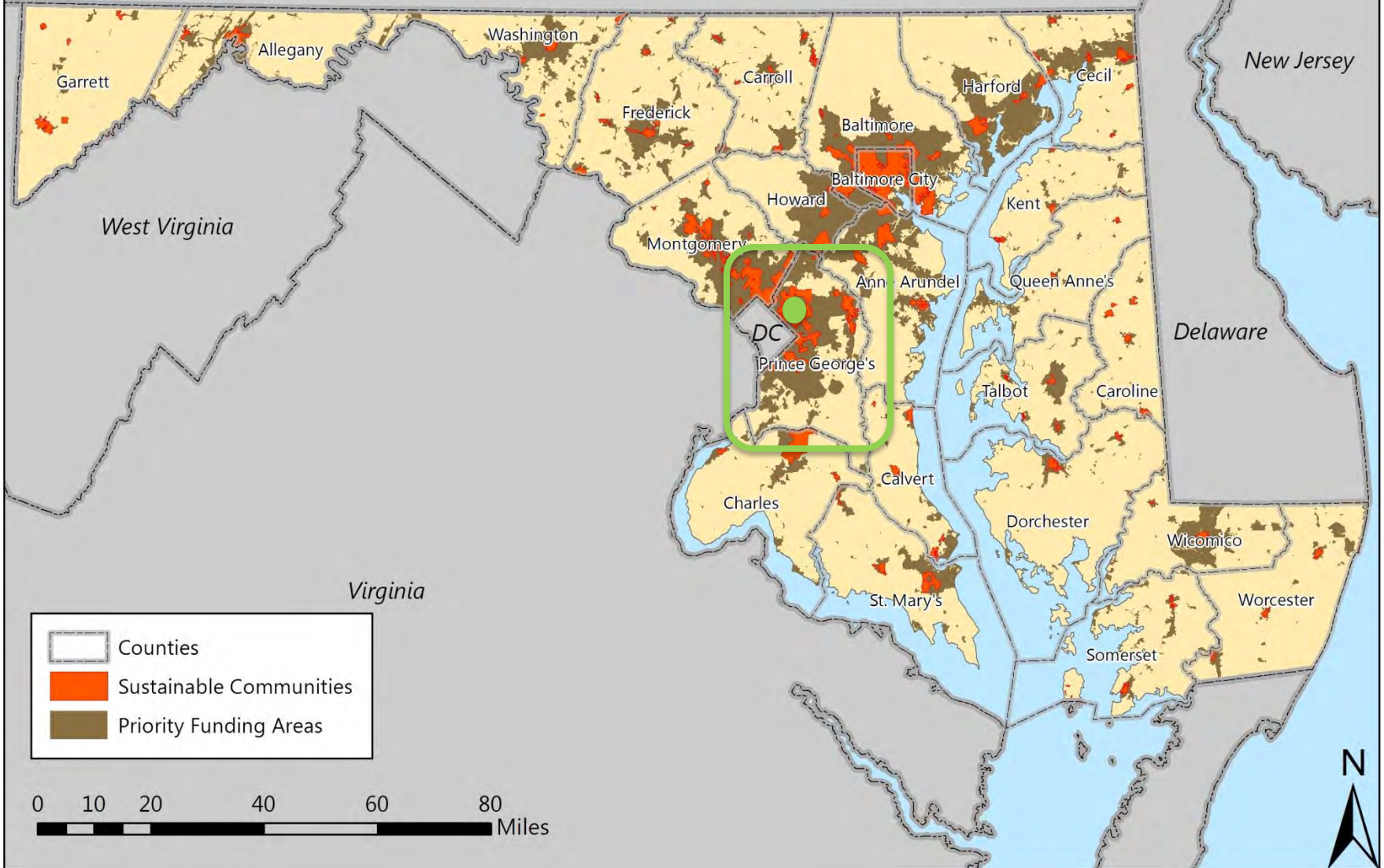
<u>Desired Outcomes and Progress Measures</u> Based on the strengths and weaknesses identify the strengths on which you would like to build and the challenges you would like to address. What outcomes are you trying to achieve? Where/ in what area do you want those changes to happen? Progress Measure: Identify how you will know that you have achieved your outcome.	<u>Strategies</u> Identify strategies that will help your community to achieve each identified outcome to the left. If applicable, break down each strategy into specific action items that outline different steps of the strategy. Specify how you are planning to achieve the desired outcomes.	<u>Implementation Partners</u> Which community stakeholders need to be involved to realize each action step and strategy? Name specific public and/or private sector partners.
Outcome 1: Progress Measures:	Strategy A: Strategy B: Strategy C:	
Outcome 2: Progress Measures:	Strategy A: Strategy B: Strategy C:	

# Sustainable Communities Plan-Project Connection

- Examples from:
- City of Hyattsville, Prince George's County
- City of Salisbury, Wicomico County
- City of Hagerstown

# Maryland's Sustainable Communities

Pennsylvania



West Virginia

Virginia

New Jersey

Delaware

Garrett

Allegany

Washington

Frederick

Carroll

Harford

Cecil

Baltimore

Baltimore City

Kent

Howard

Montgomery

Ann Arundel

Queen Anne's

DC

Prince George's

Talbot

Caroline

Charles

Calvert

Dorchester

Wicomico

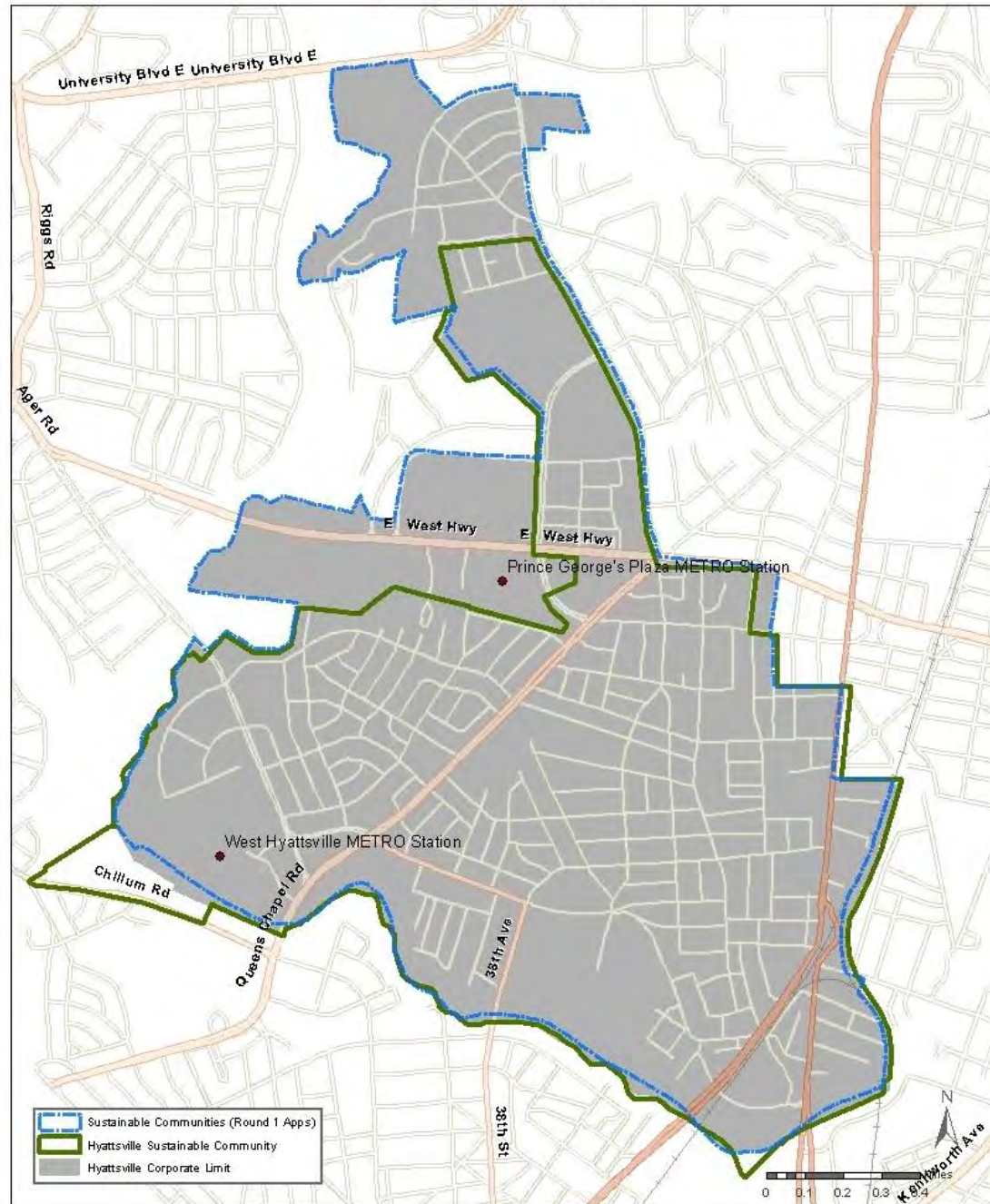
Worcester

St. Mary's

Somerset

# CITY OF HYATTSVILLE

- Two METRO stations with great connectivity to DC
- 2000 Population: 14,733
- 2010 Population: 17,557
- Incorporated 1886



# HYATTSVILLE - BASELINE

## Strengths

- Subscribes to sustainability principles
- Active Gateway A&E district & Gateway CDC
- Two WMATA Metro stations
- Proximity to major regional employment centers and universities

## Challenges

- Market in transition
- Minimal walkability
- Traffic Congestion, US Route 1
- Commercial vacancies and blight remain
- Limited housing stock – single-family & large multi-family homes
- Had many auto-centric businesses and buildings
- Landlocked



Source: Google, 2010.



# HYATTSVILLE: KEY OUTCOMES AND ACTION PLAN

## Transportation & Environment

- Encourage non-vehicular connectivity to metro stations

## Local Economy

- Enhance historic & A&E districts
- Reuse & occupy vacant commercial buildings and spaces
- Promote infill development and redevelopment

## Housing

- Increase home ownership rates
- Improve residential property maintenance





# HYATTSVILLE - PROJECTS

SC Strategy:  
Promote Infill Development



DHCD, MDOT, DBED &  
MDE collaboration –  
infrastructure funding for infill  
CL Grant Award: \$350,000



SC Strategy:  
Reuse and Occupy Vacant Commercial Spaces



Photo Above:  
Pyramid Atlantic – adaptive  
reuse of vacant building for arts  
and non-profit use (part of CL-  
funded façade improvement  
program)

Photos to left:  
Commercial Façade  
Improvement Program CL  
Grant (FY15-17): \$150,000



Maryland Department of Housing  
and Community Development  
Secretary Kenneth C. Holt

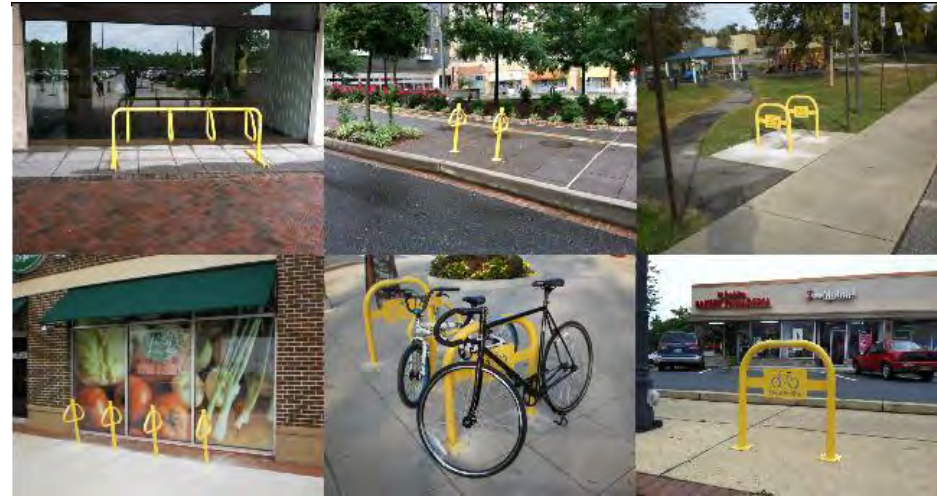
# HYATTSVILLE - PROJECTS

SC Strategy:  
Promote Infill Development



Lot Acquisition and Site preparation for  
downtown structured garage.  
CL/SDF Grant Awards: \$1,200,000

SC Strategy: Encourage non-vehicular  
connectivity to metro stations



Installation of bike racks in downtown  
CL Award: \$110,000

SC Strategy: Enhance historic and A&E  
Districts

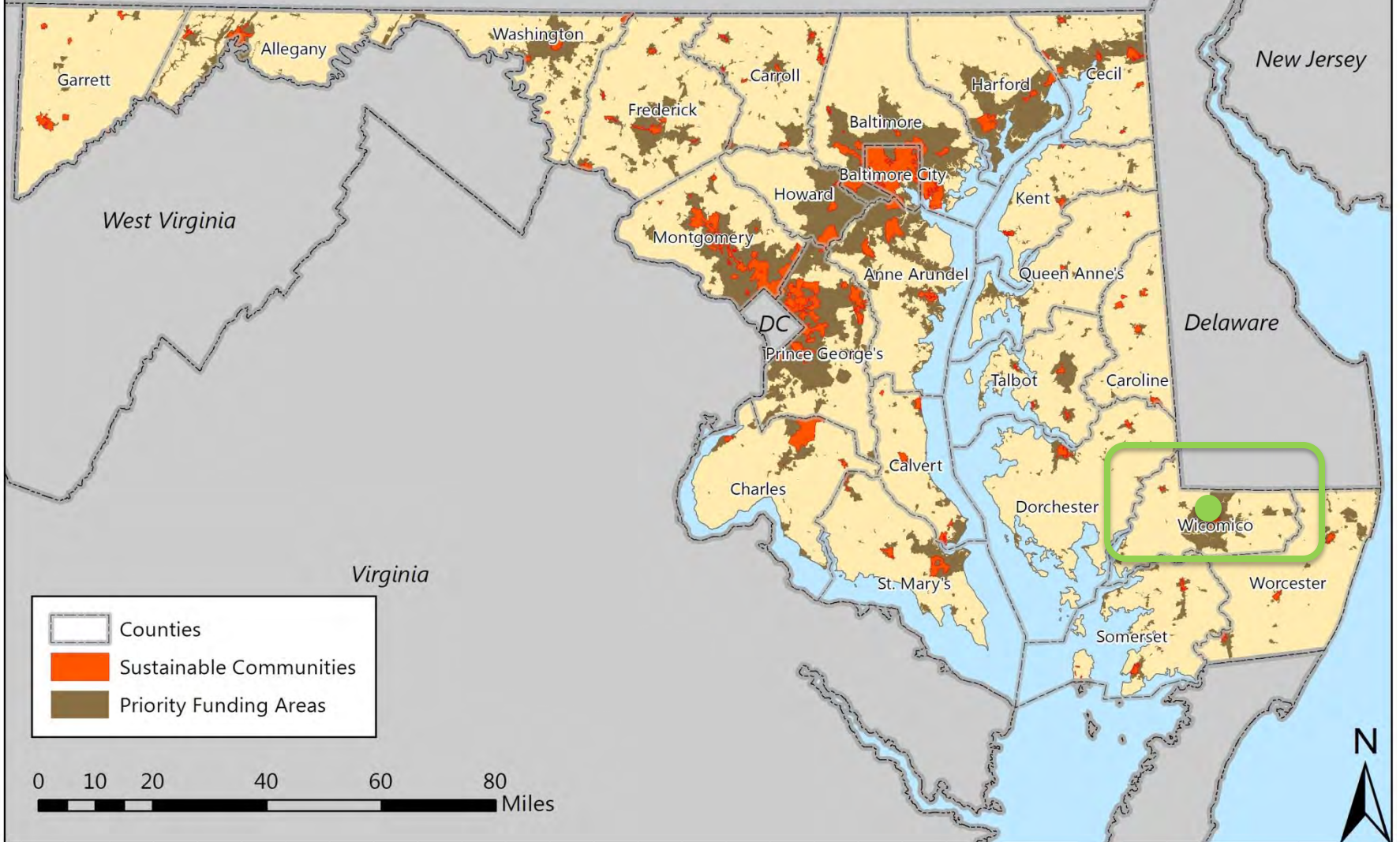


Public Place-making project  
CL Award: \$75,000



# Maryland's Sustainable Communities

Pennsylvania



West Virginia

New Jersey

Delaware

Virginia

Garrett

Allegany

Washington

Frederick

Carroll

Harford

Cecil

Baltimore

Baltimore City

Howard

Kent

Montgomery

Anne Arundel

Queen Anne's

DC

Prince George's

Talbot

Caroline

Charles

Calvert

Dorchester

Wicomico

St. Mary's

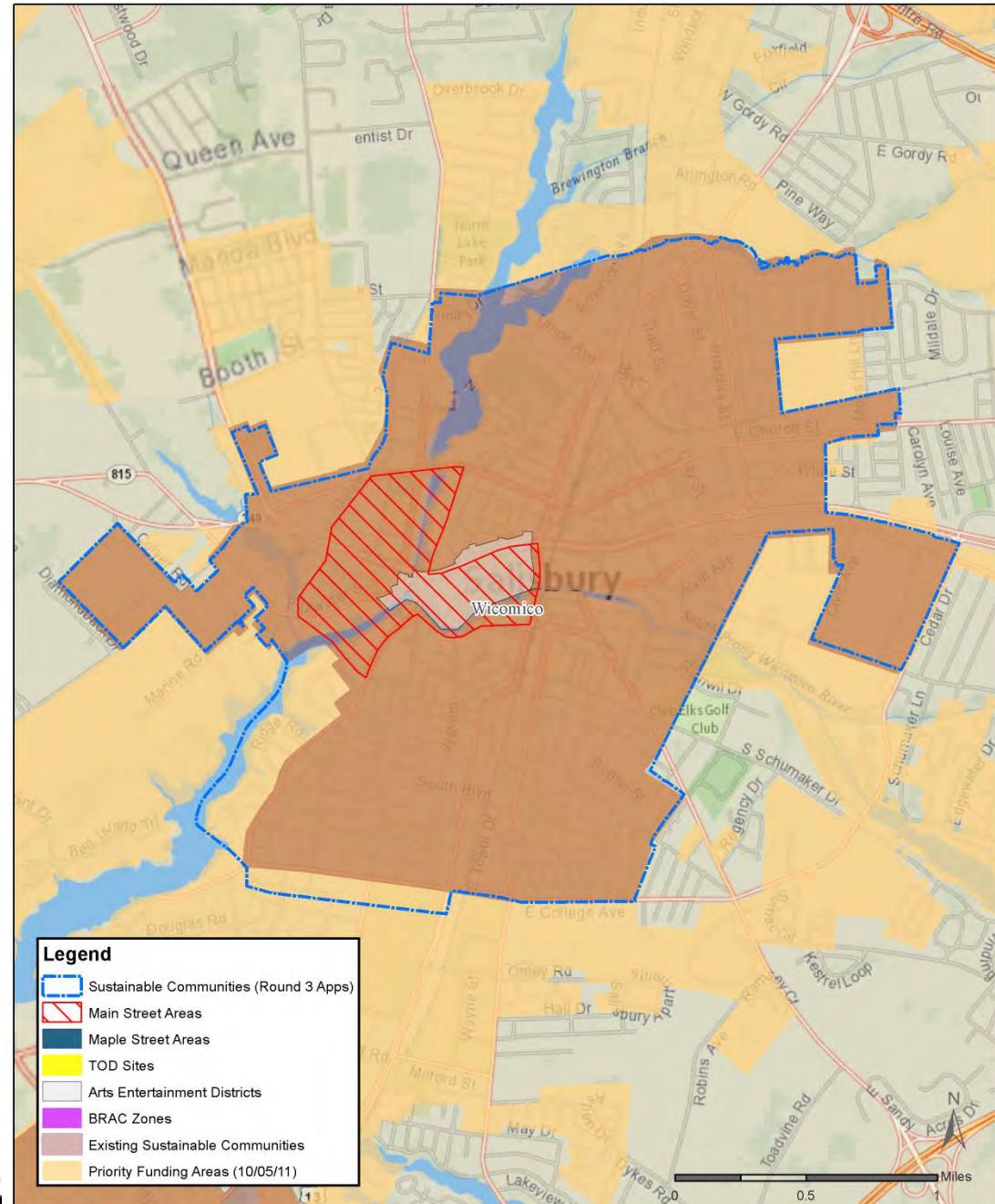
Worcester

Somerset

# City of Salisbury

- Maryland Main Street & Arts & Entertainment District
- 2000 Population: 23,743
- 2010 Population: 30,343
- Incorporated: 1854
- County Seat, largest City on Eastern Shore
- Institutional Asset: Salisbury University

## Sustainable Communities Applications Round 3: City of Salisbury



# CITY OF SALISBURY

## Assets

- Invested in sustainability and natural resources
- Strong local capacity; NHS local housing organization
- City park/zoo



Above, downtown Salisbury

## Challenges

- Lack student housing on campus, High percentage of rental housing
- Blighted and aging housing stock, downtown decline (commercial vacancies)
- Relatively low AMI (\$37,705 in 2015; **27.4% of population in poverty**)

## Key Strategies

- Preserve and protect cultural resources and traditional business districts (i.e. Main Street)
- Improve recreational institutions (marina, zoo, playgrounds)
- Expand bikeways, streetscapes, pedestrian infrastructure
- Enhance and expand green space
- Demolish or rehabilitate blighted and sub-standard housing and buildings

# SALISBURY - PROJECTS

## SC Strategy:

Demolish or rehabilitate sub-standard housing/buildings



## Daily Times Demolition Project

SDF Award: \$250,000

*-Clear site for new mixed-use development – retail + health-related educational building*

SC Strategy:  
Preserve cultural resources and  
Traditional business districts



New Windows at Chesapeake East!



leaky, won't close- must keep open with a stick, broken panes, rotted wood and peeling paint.

beautiful- easy to open, energy efficient windows- with screens so the second floor is useable in all seasons. And the building looks the same vintage but much nicer. many thanks!!  
John Orth  
Dana Simson

Commercial Building Improvement Program  
CL Award: \$275,000



Maryland Department of Housing and Community Development  
DHCD Secretary Kenneth C. Holt

# SALISBURY - PROJECTS

SC Strategy:  
Expand/enhance bikeways,  
streetscapes, pedestrian infrastructure



Traffic calming project  
CL Award: \$100,000

SC Strategy:  
Improve recreational facilities



Basketball Court  
Improvements  
Program Open Space,  
DNR Award: \$100,000

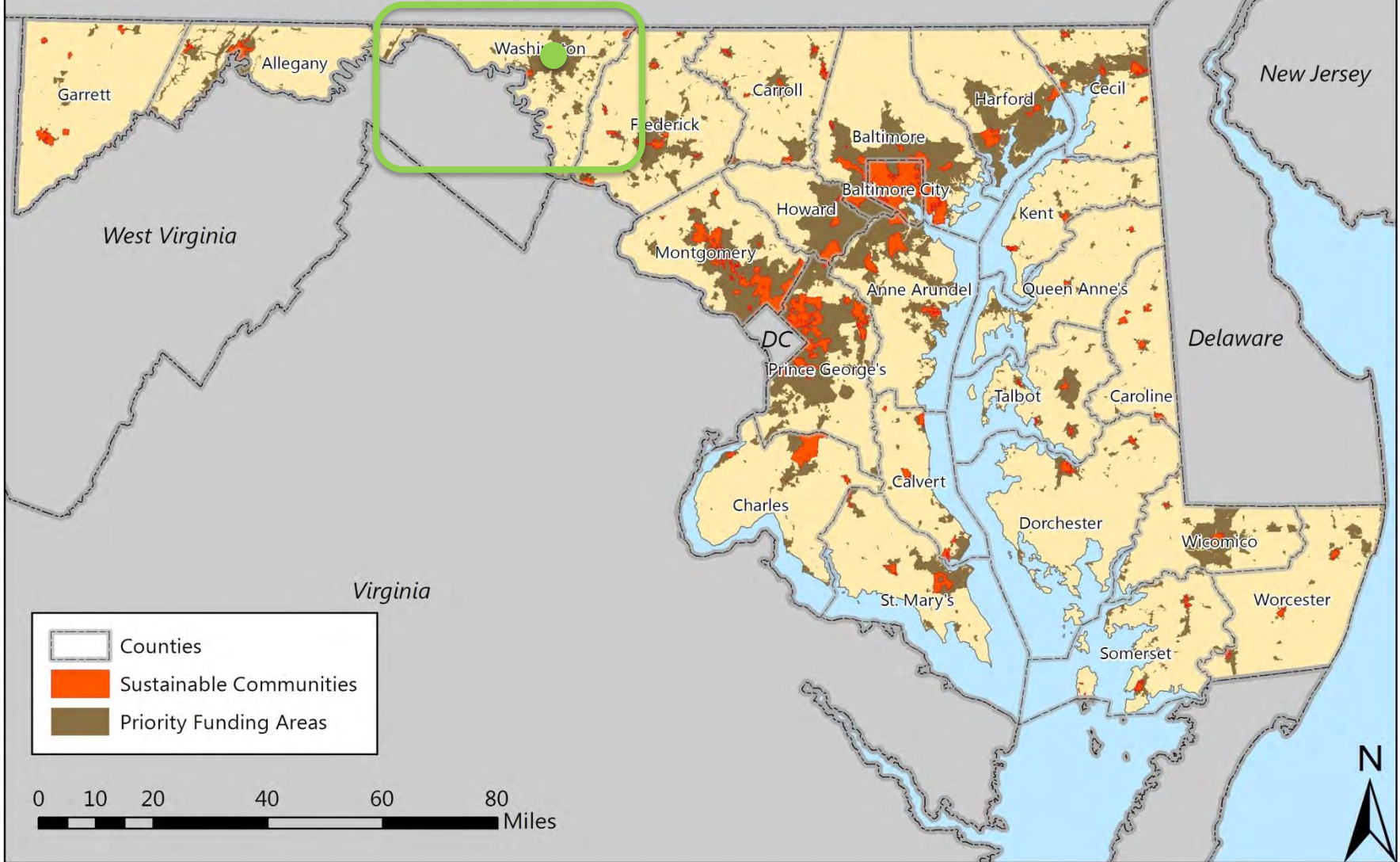
SC Strategy: Preserve/protect cultural resources



Charles Chipman  
Cultural Center,  
Structural Repairs  
CL Award: \$75,000

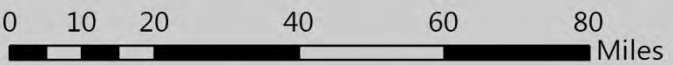
# Maryland's Sustainable Communities

Pennsylvania



Legend:

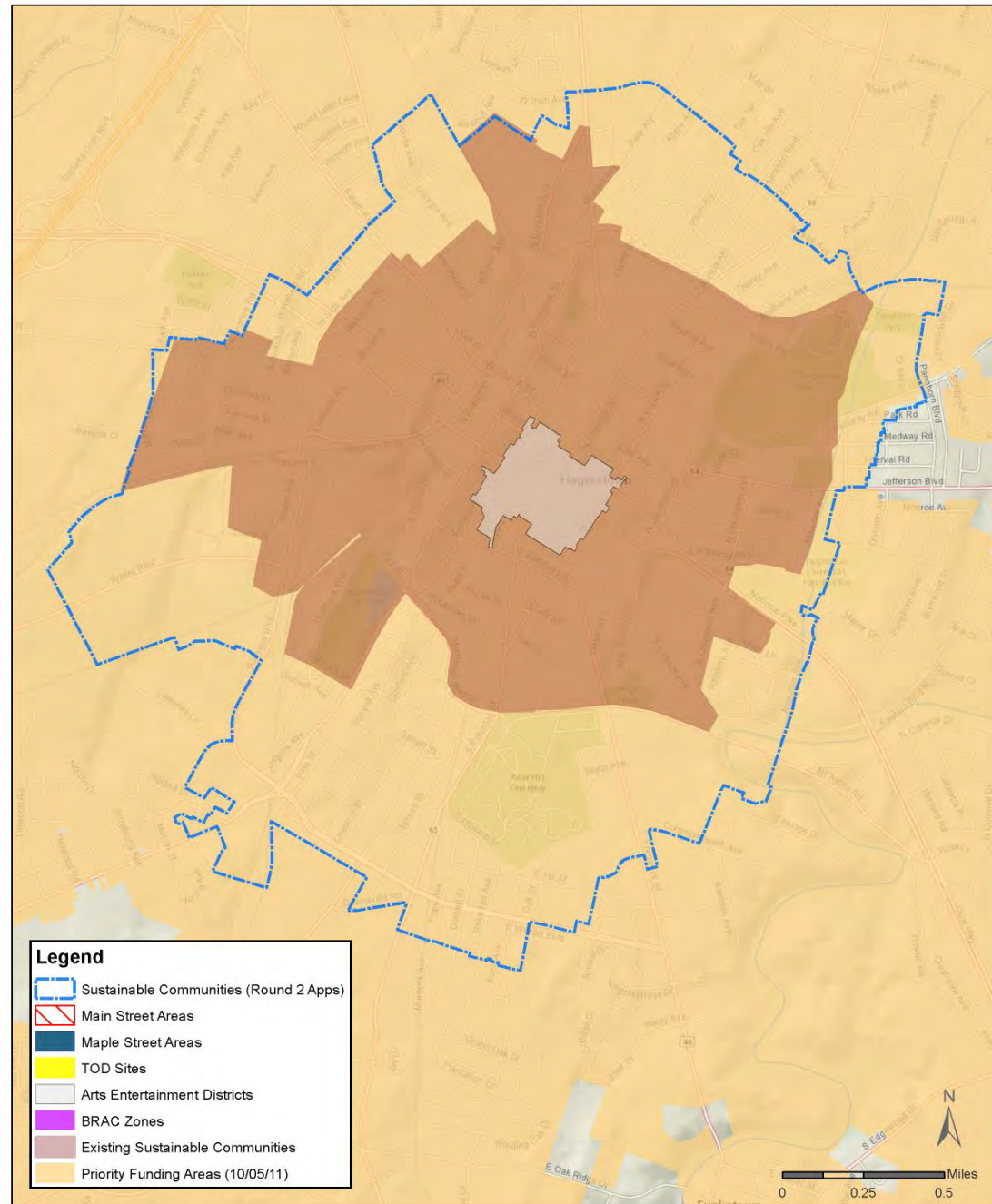
- Counties
- Sustainable Communities
- Priority Funding Areas





# CITY OF HAGERSTOWN

- Maryland Main Street & Arts & Entertainment District
- 2000 Population: 36,687
- 2010 Population: 39,662
- Incorporated: 1813
- County Seat, MD Main Street, A&E District
- Institutional Asset: University System of Maryland



## Strengths

- Active A&E district, MD Main Street
- Good tree canopy – 22%, Tree City USA designation
- Low cost of living
- Diverse housing stock – row homes, detached single family historic homes

## Challenges

- Community engagement – 72% of SC housing units are renter occupied
- Vacant, underutilized commercial and industrial buildings
- 32% vacancy rate of ground floor retail spaces in downtown



University System of Maryland Hagerstown (USMH) is an education hub for Hagerstown's Sustainable Community Area and beyond.



# HAGERSTOWN: KEY OUTCOMES

## Transportation & Environment

- Develop pocket parks/dog parks
- Implement bicycle master plan

## Local Economy

- Establish business assistance and commercial building rehab programs
- Recruit higher wage employers

## Housing

- Increase home ownership rate
- Diversify housing stock
- Reuse of upper stories



# HAGERSTOWN - PROJECTS

SC Strategy:  
Develop pocket parks/dog parks/  
green space



Plot in Hagerstown Community Garden, 200 Block South Potomac Street



Memorial Park, South Potomac Street. This park was built in 2012-2013.

SC Strategy: Increase home  
ownership rate



CL Grant Awards: \$250,000  
Convert 2 multi-unit rental properties to  
home ownership



Maryland Department of Housing  
and Community Development  
Secretary Kenneth C. Holt

# HAGERSTOWN - PROJECTS

SC Strategy: Encourage reuse of vacant downtown buildings for residential and commercial uses



CL Grant Awards: \$200,000  
Convert vacant upper stories and abandoned buildings into artist lofts and student housing



CL Grant Awards: \$70,000  
Façade Improvements to commercial buildings for new businesses



City has increased number of downtown events  
*\*2013-2016 – 43 new businesses in City Center – only 9 businesses closed*

# THE CONSERVATION FUND



Parks with  
**PURPOSE**

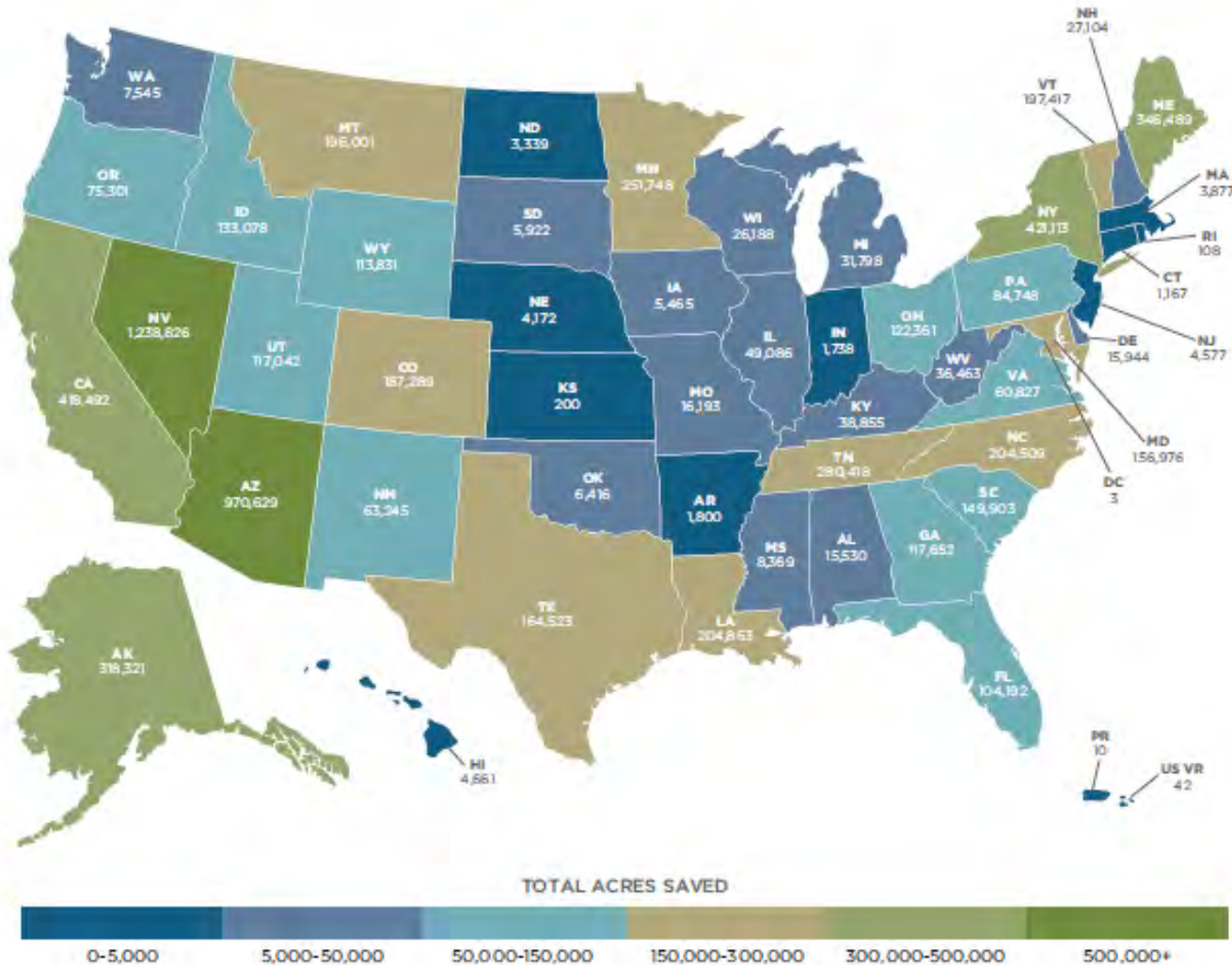
A Program of The Conservation Fund



**Shannon Lee**  
Urban Conservation Manager  
The Conservation Fund

**Darryl Haddock**  
Environmental Education Director  
West Atlanta Watershed Alliance

TOTAL ACRES PROTECTED SINCE 1985

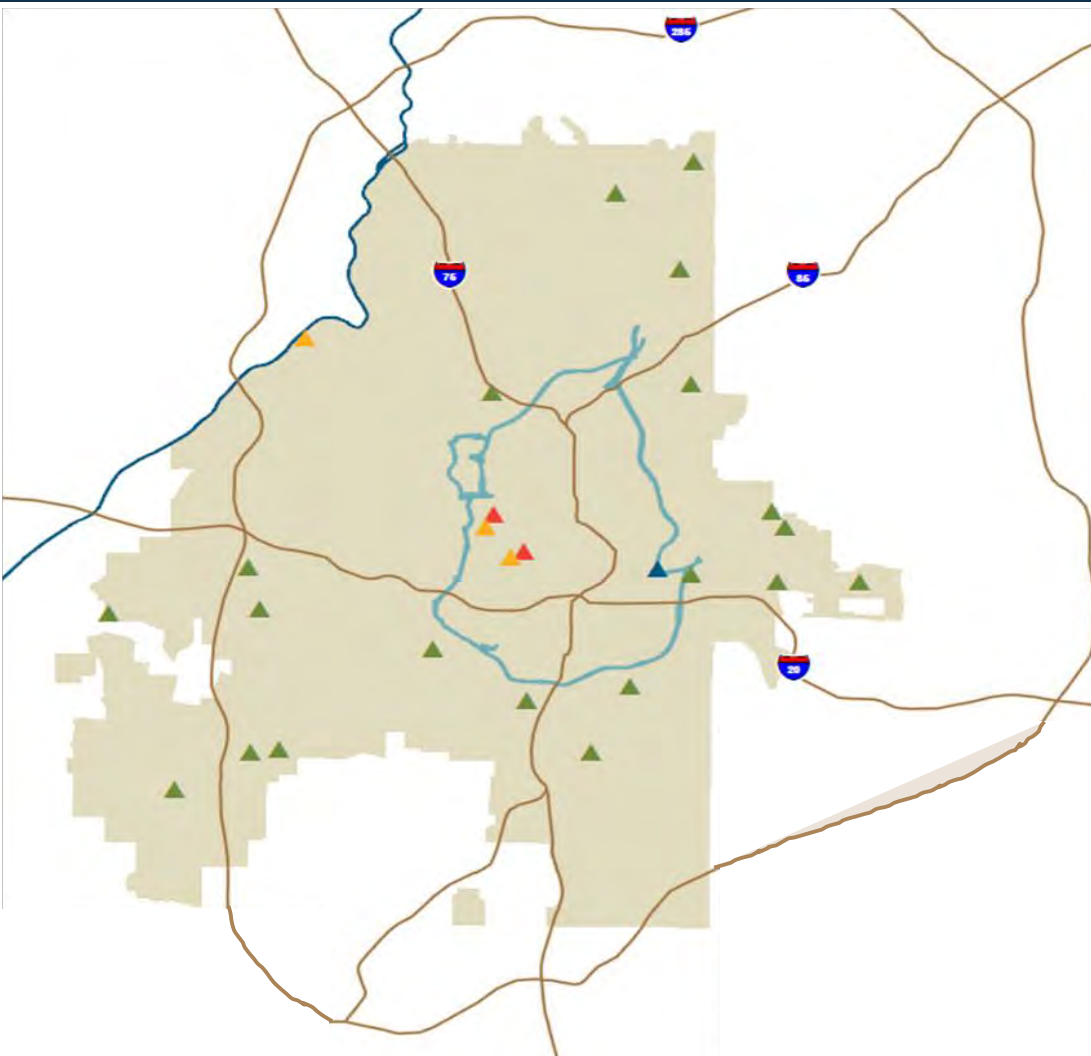


96%

of every dollar goes back into our mission.

CHARITY NAVIGATOR

Four Star Charity



2003-2017

- 32 Parks
- 52 Projects
- 253 acres
- \$23.7 million

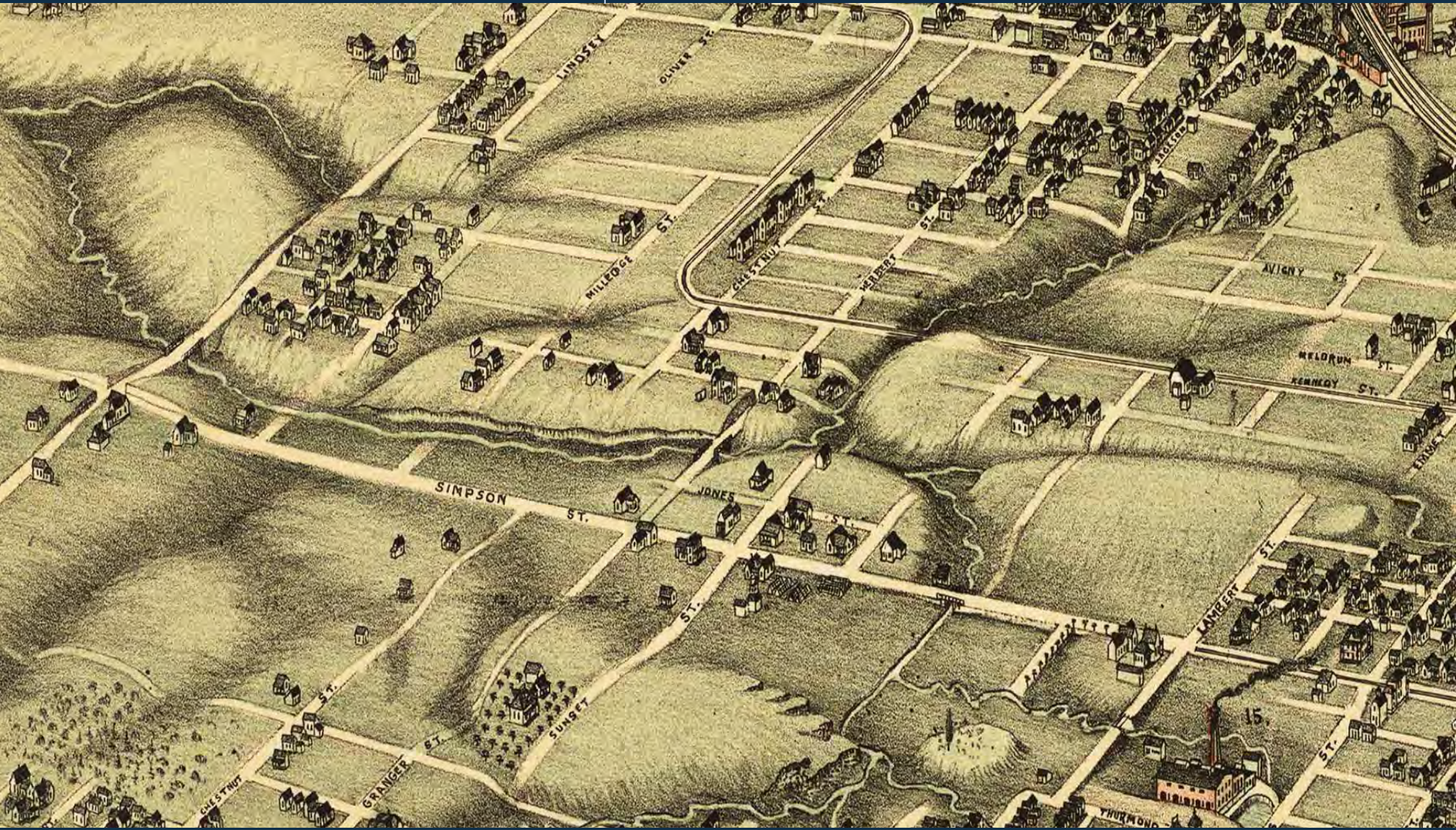


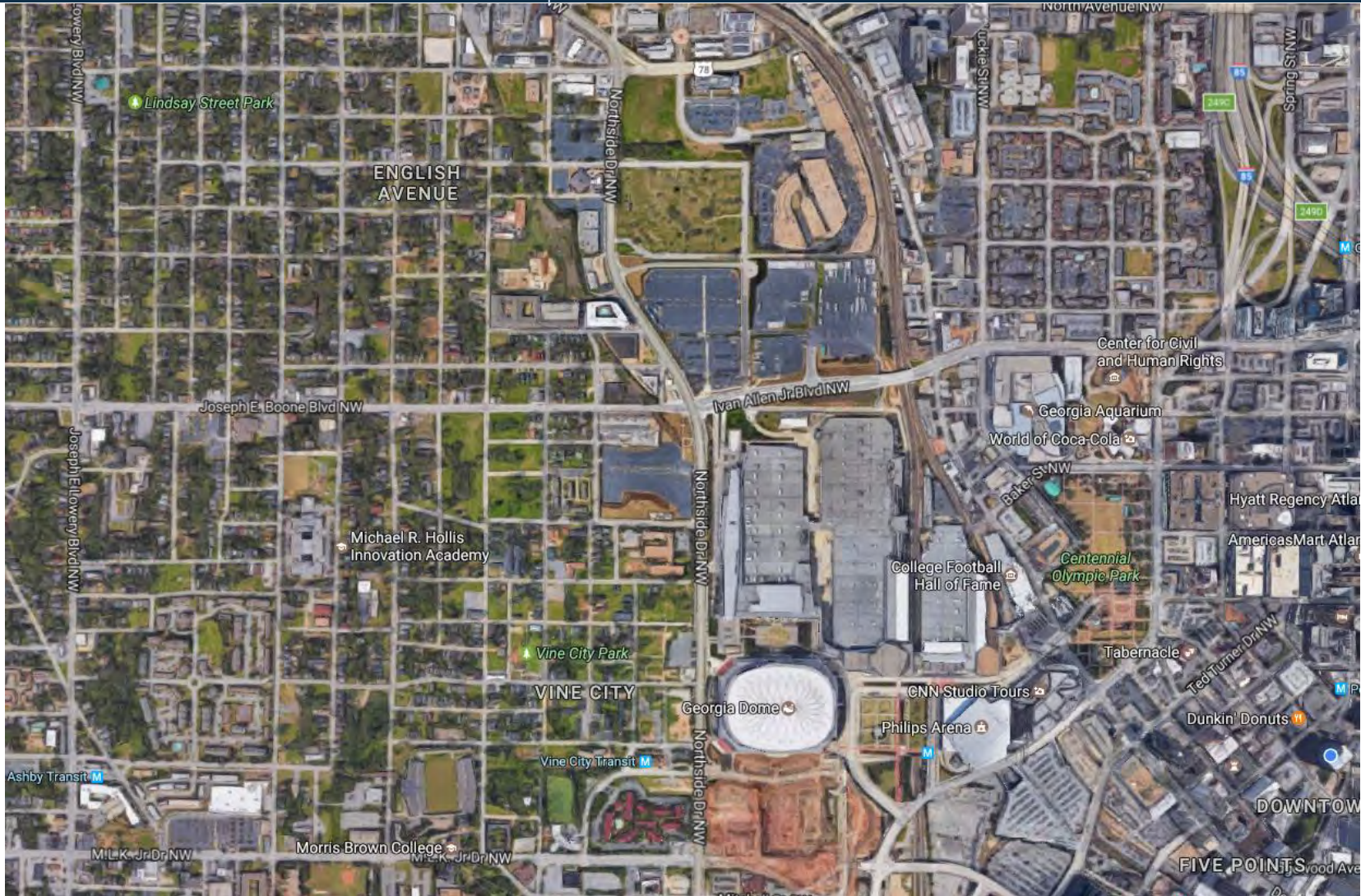
## *The Proctor Creek Communities: Vine City and English Avenue*

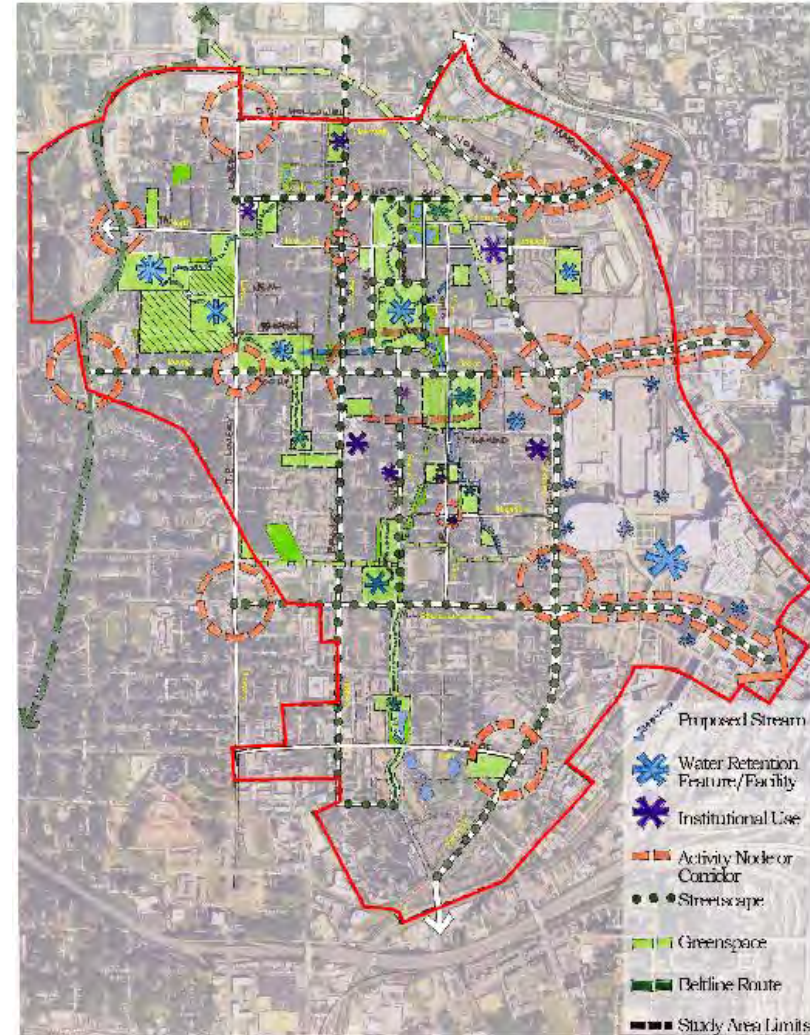
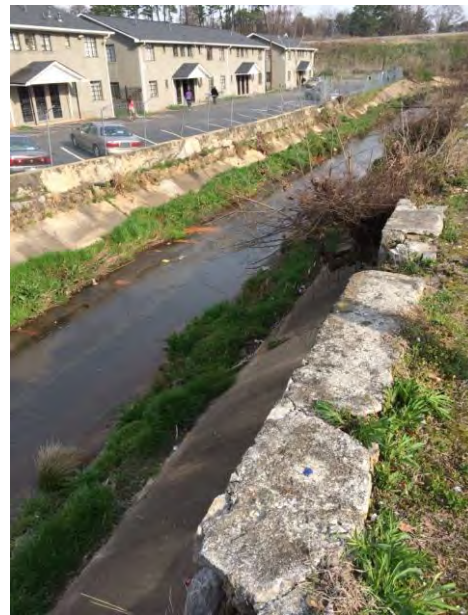
- 40% population decline in a decade
- Highest poverty, vacancy and crime rates
- 40% foreclosure rate
- Average household income \$22,474
- Fewest acres of planned greenspace
- Natural creek obliterated by development
- Severe flooding from stormwater overflows
- 29 EPA identified hotspots along the creek
- Feeds directly into the Chattahoochee River



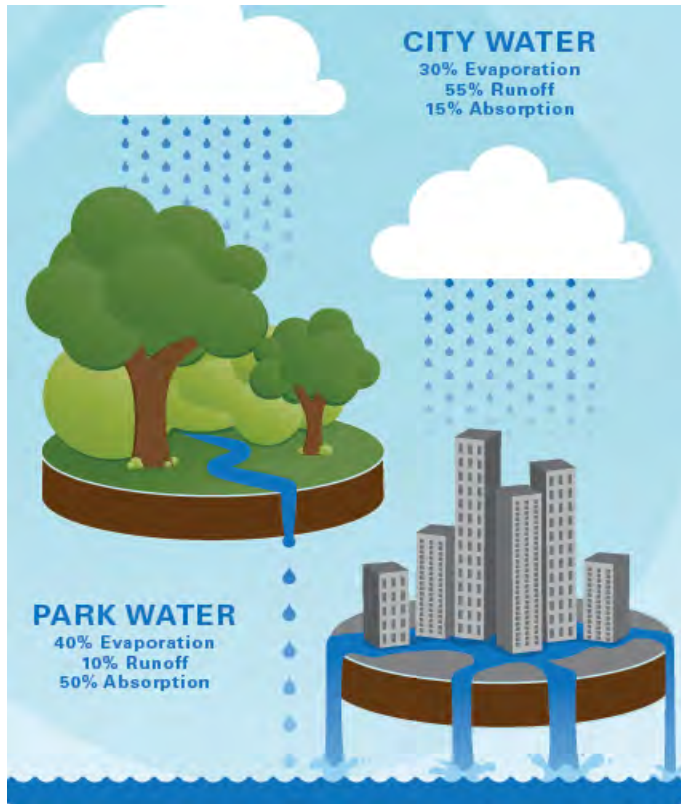
*Significant Problems*







Proctor North Avenue:  
A Green Infrastructure  
Vision - 2010



Dry Creek Beds



Permeable Pavers



Ponds



Bioswales



Rain Gardens





*2 years, 6 lots, 1.5 acres*



# Resourceful Communities

*People. Places. Opportunities.*







## WAWA's Mission – A cleaner, greener, healthier, more sustainable West Atlanta



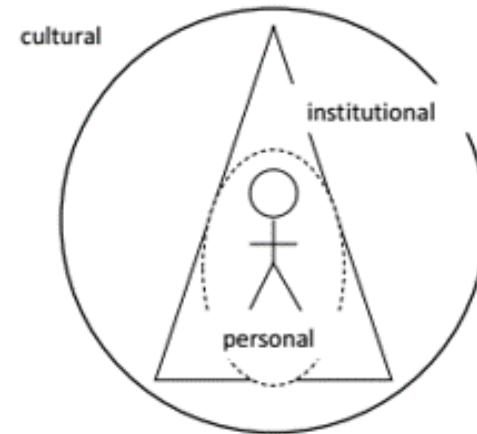
“Proctor Creek used to be a source of pride for our community - a place where children played, where people could fish, and where people were baptized.”

- Na'Taki Osborne Jelks,  
WAWA Board Chair

- People of color are 79% more likely to live in communities with industrial pollution
- 96% of African-American children who live in inner cities have unsafe amounts of lead in their blood
- People of color are more likely to live in areas with less planned parks and greenspaces

Source: EPA

## Three Expressions of Racism





## Workforce Training



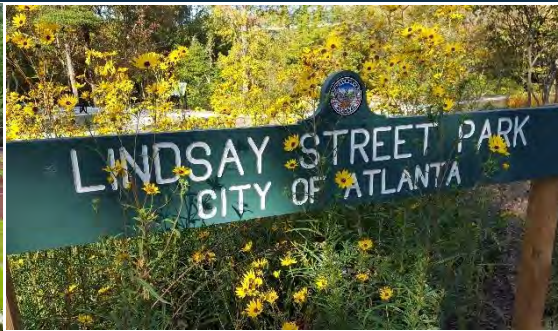
## STEM Science Festivals



## Citizen Scientists



## Peer to Peer Learning



Workforce Training & Employment | Green Infrastructure  
Outdoor Classroom | Pollinator Gardens | Playground

- EPA 2016 Rain Catcher Award
- APA Excellence in Sustainability Award



## WHAT IS A WATERSHED?

A watershed is the land area that drains to a common body of water.

This park is in the Proctor Creek Watershed, which drains into Proctor Creek and then into the Chattahoochee River, Atlanta's main source of drinking water.



Eventually, the Chattahoochee River flows all the way to the Gulf of Mexico.





PROJECT REINVEST

21 Funders ~ \$3.7 million  
7 Million Gallons of Stormwater Captured Annually



## **Shannon Lee**

Urban Conservation Manager  
slee@conservationfund.org  
404-221-0405



## **Darryl Haddock**

Environmental Education Director  
darryl@wawa-online.org  
404-752-5385



# Contact Information

## Award-Winning Sustainability, Part 1

**Maryland Department of Housing and Community Development Division of Neighborhood Revitalization (DHCD/NR):** Winner of Leadership in Sustainability award

- **Kevin Baynes, AICP, [kevin.baynes@maryland.gov](mailto:kevin.baynes@maryland.gov)**
- **Mary Kendall, [mary.kendall@maryland.gov](mailto:mary.kendall@maryland.gov)**

**Lindsay Street Park:** Winner of Sustainable Park, Recreation, or Open Space Project Award

- **Shannon Lee (The Conservation Fund), [slee@conservationfund.org](mailto:slee@conservationfund.org)**
- **Darryl Haddock (West Atlanta Watershed Alliance), [darryl@wawa-online.org](mailto:darryl@wawa-online.org)**

**SCD Awards Program:** [jenniferk@rhodeside-harwell.com](mailto:jenniferk@rhodeside-harwell.com)

**SCD Information:** [sustainableplanning.net](http://sustainableplanning.net)

APA

Sustain

